



Old Industrial Factory

Julia Howell



juliahowell.artstation.com



Old Industrial Factory

Julia Howell



juliahowell.artstation.com



Old Industrial Factory

Julia Howell



juliahowell.artstation.com



Old Industrial Factory

Julia Howell



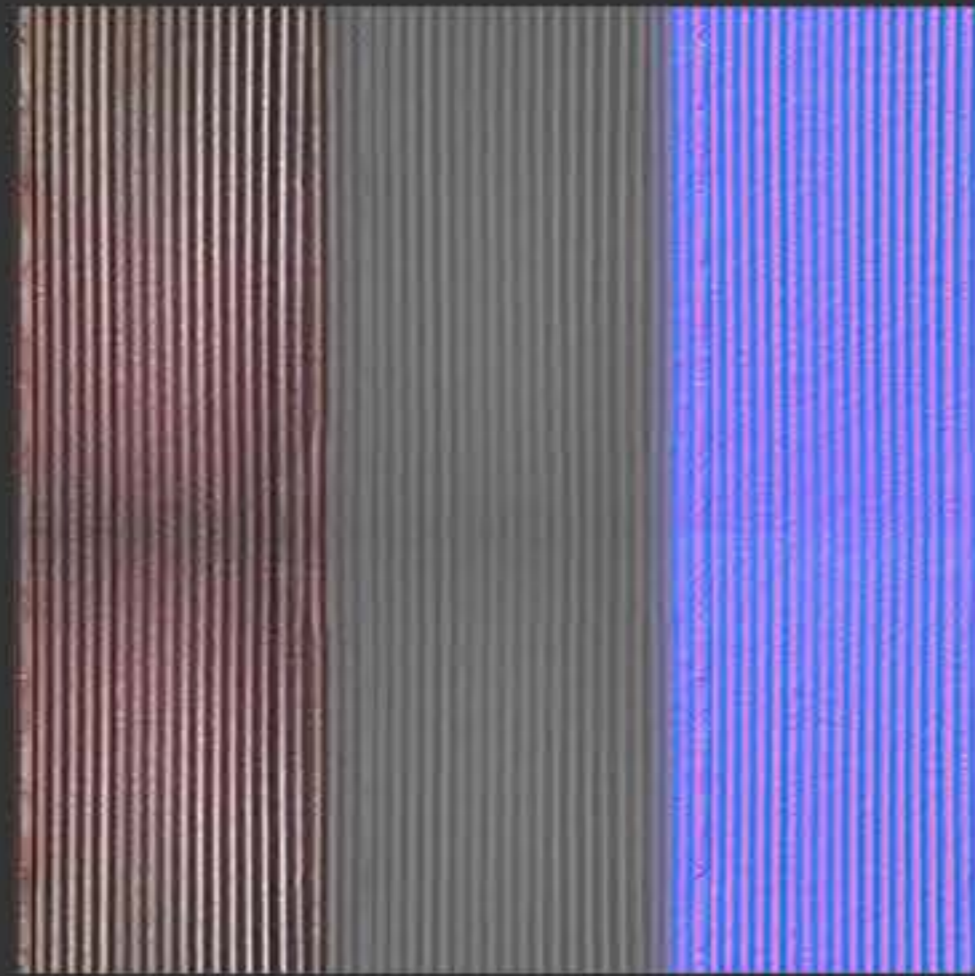
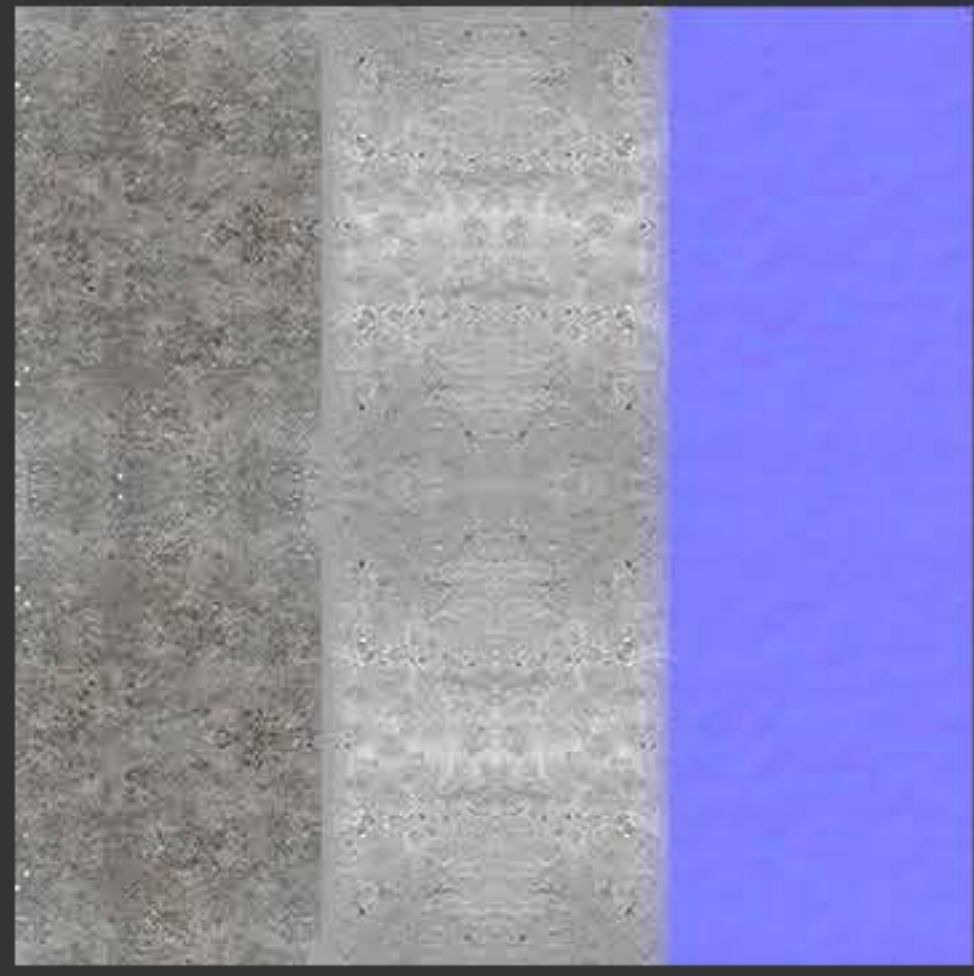
juliahowell.artstation.com



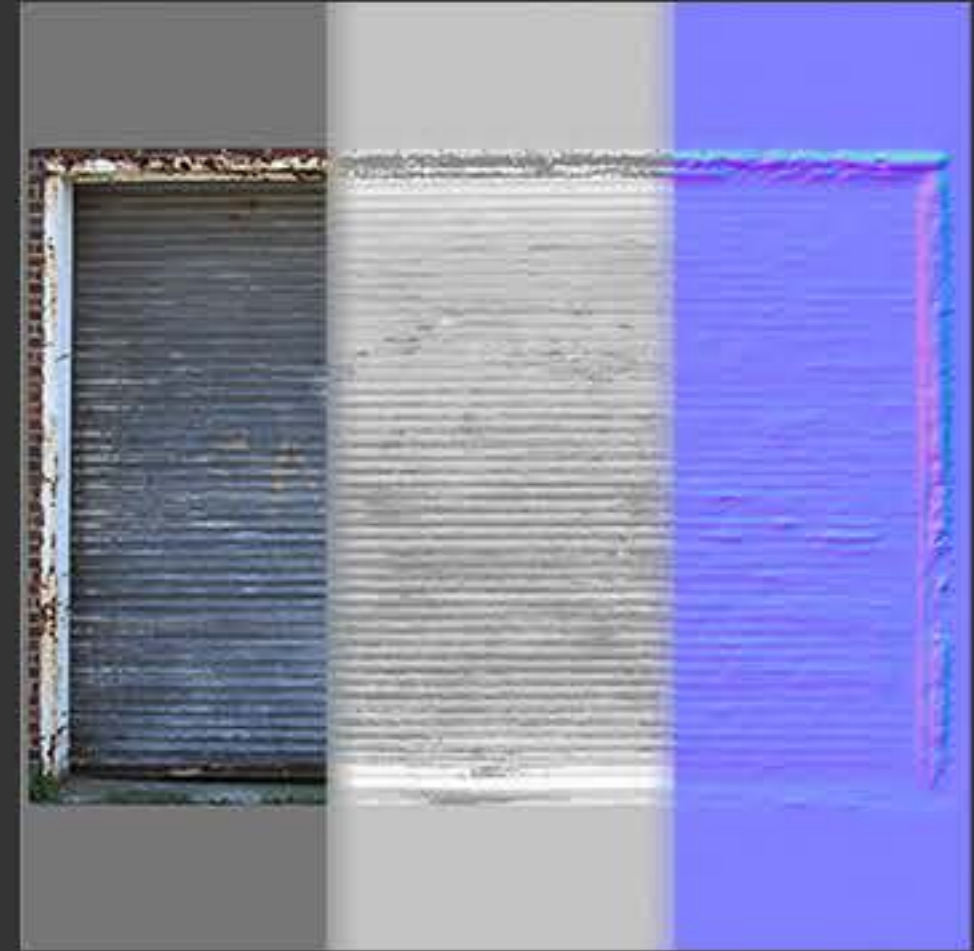
Old Industrial Factory

Julia Howell

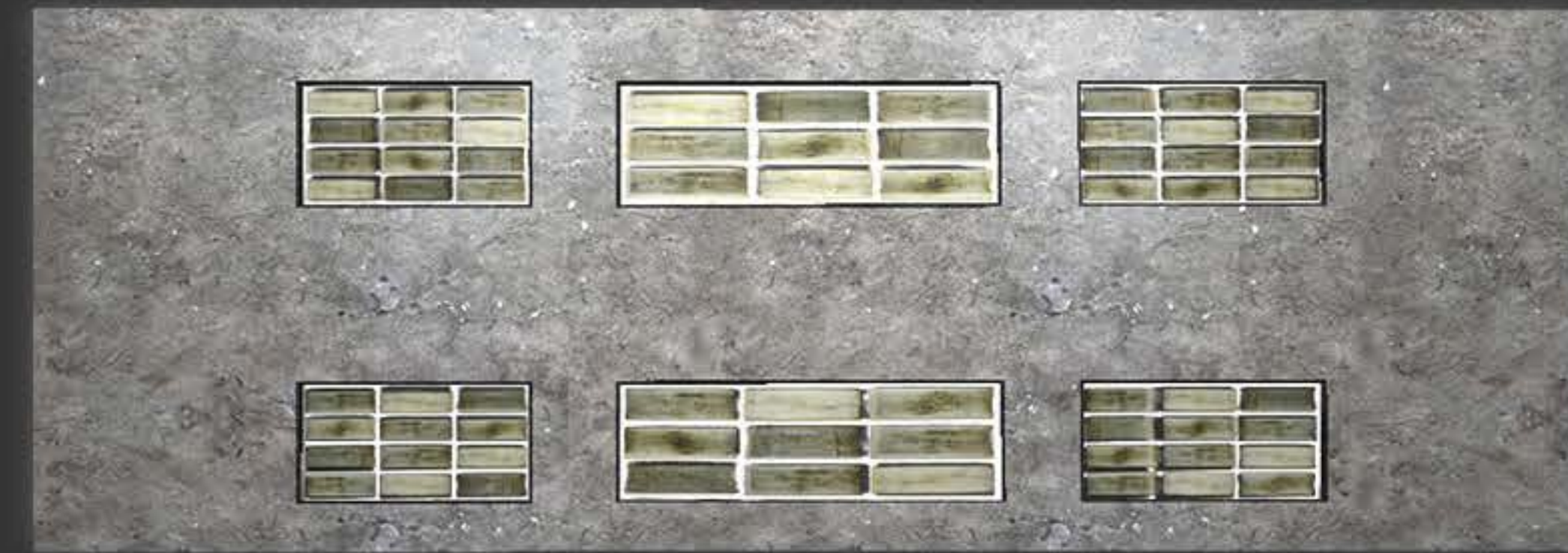
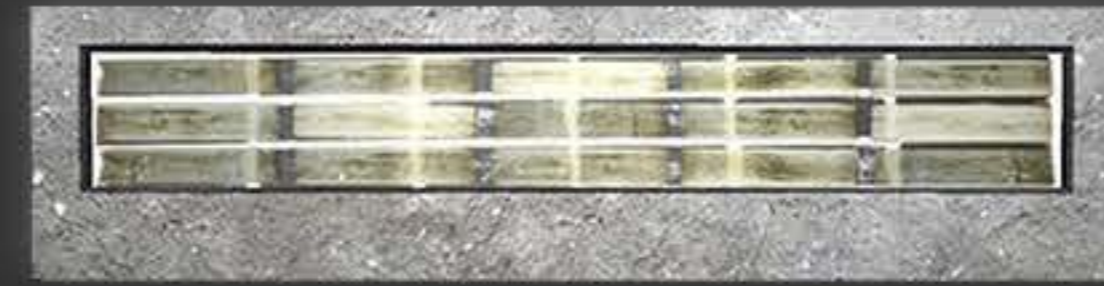




Diffuse/Rough/Normal



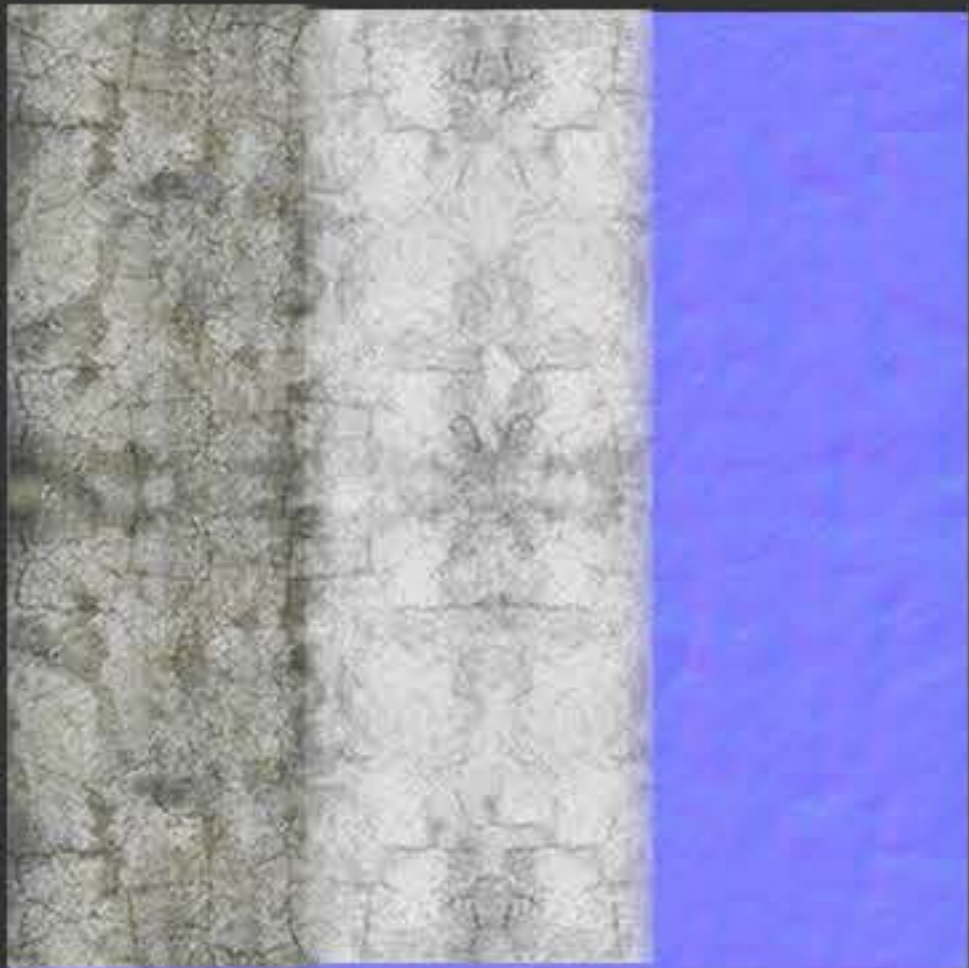
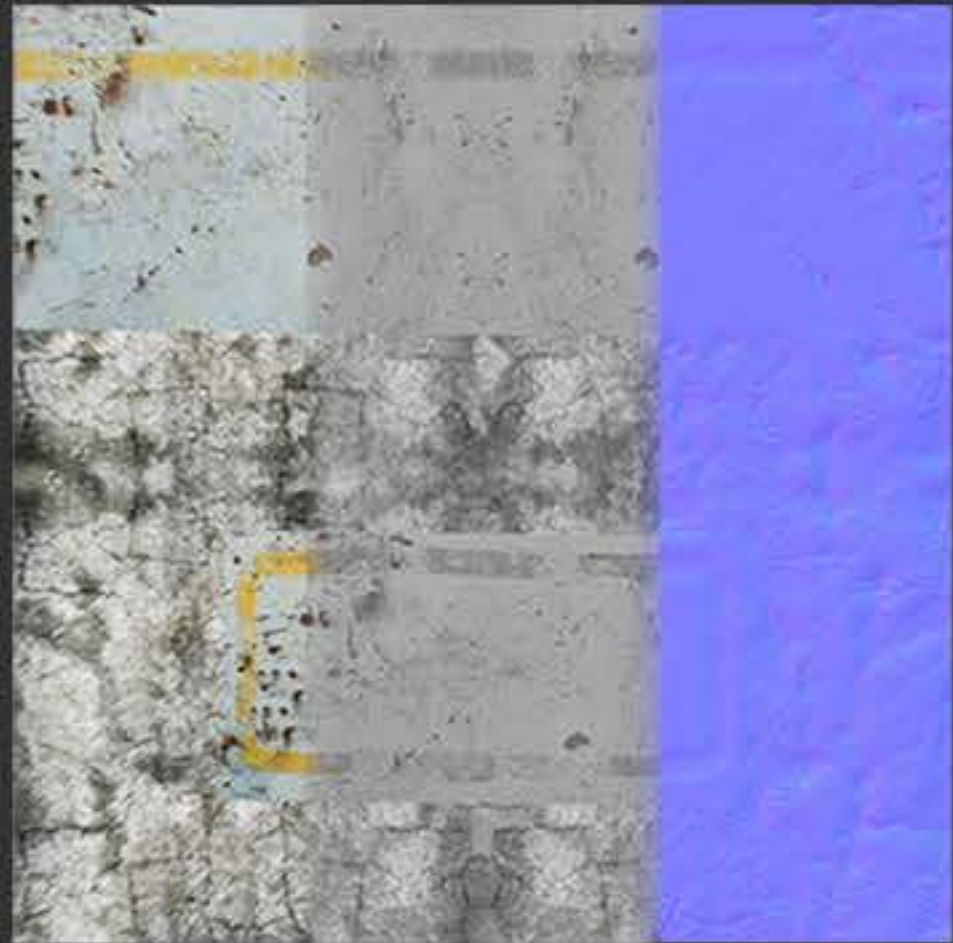
Diffuse/Mask



Texture Size: 2048

Rendered in Maya with Diffuse Map

Diffuse/Rough/Normal

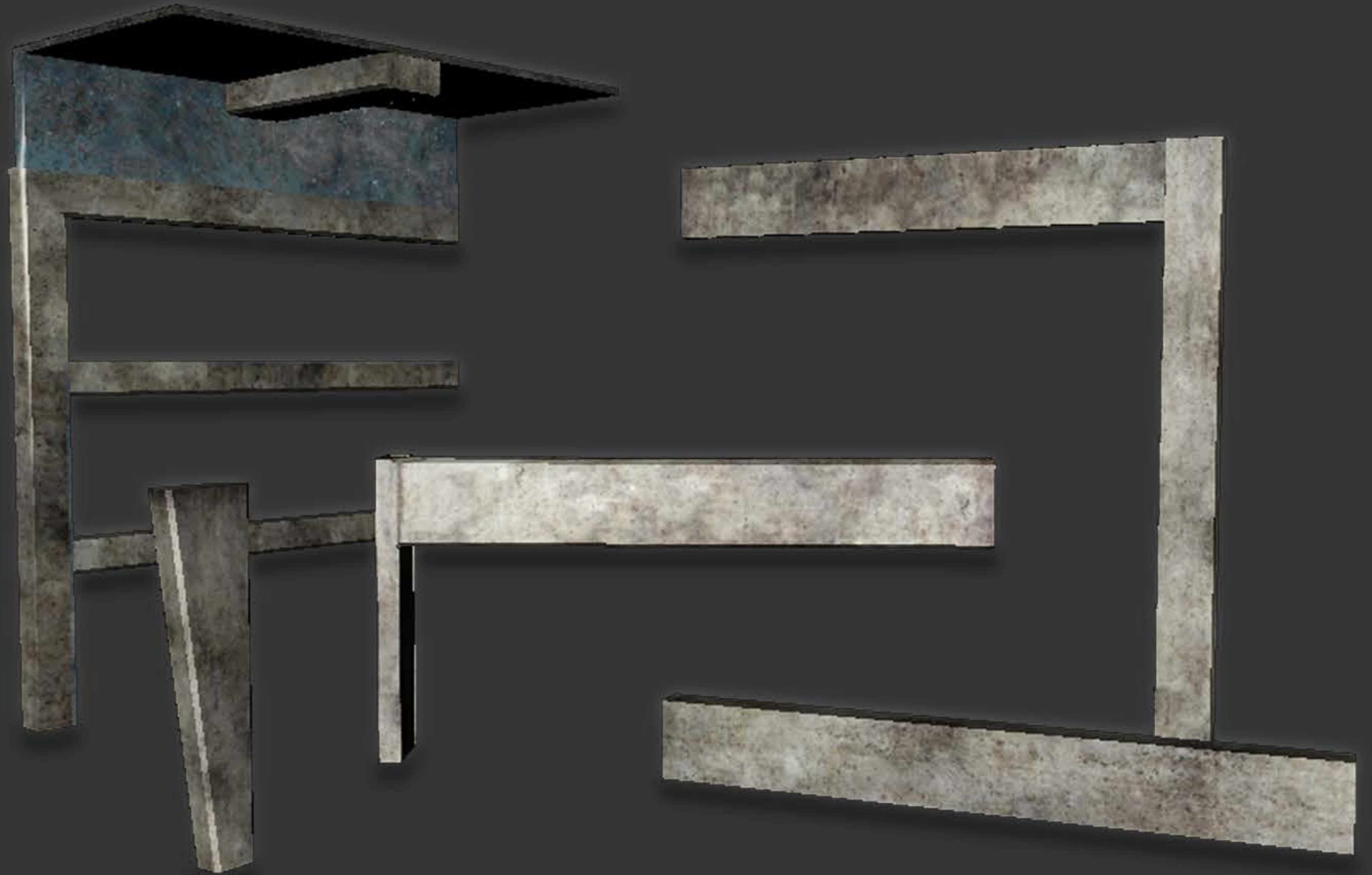
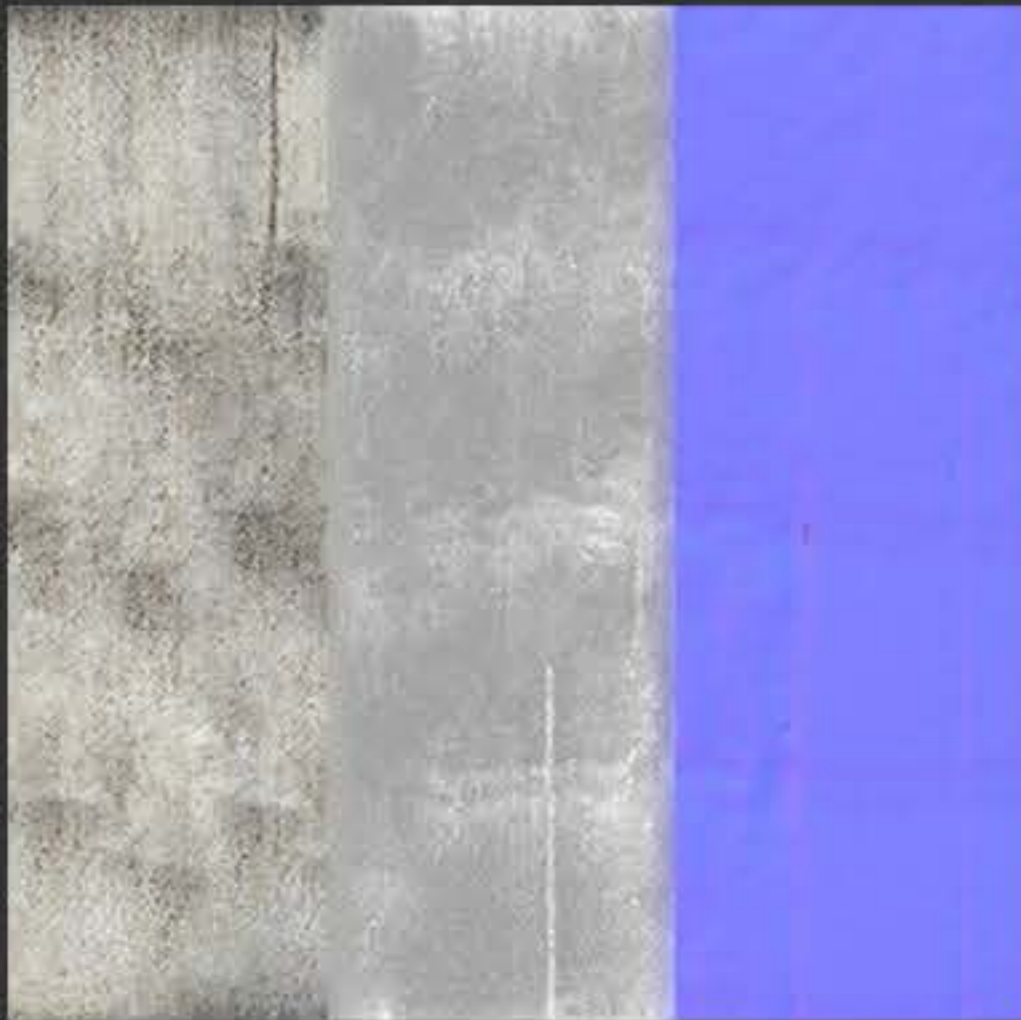
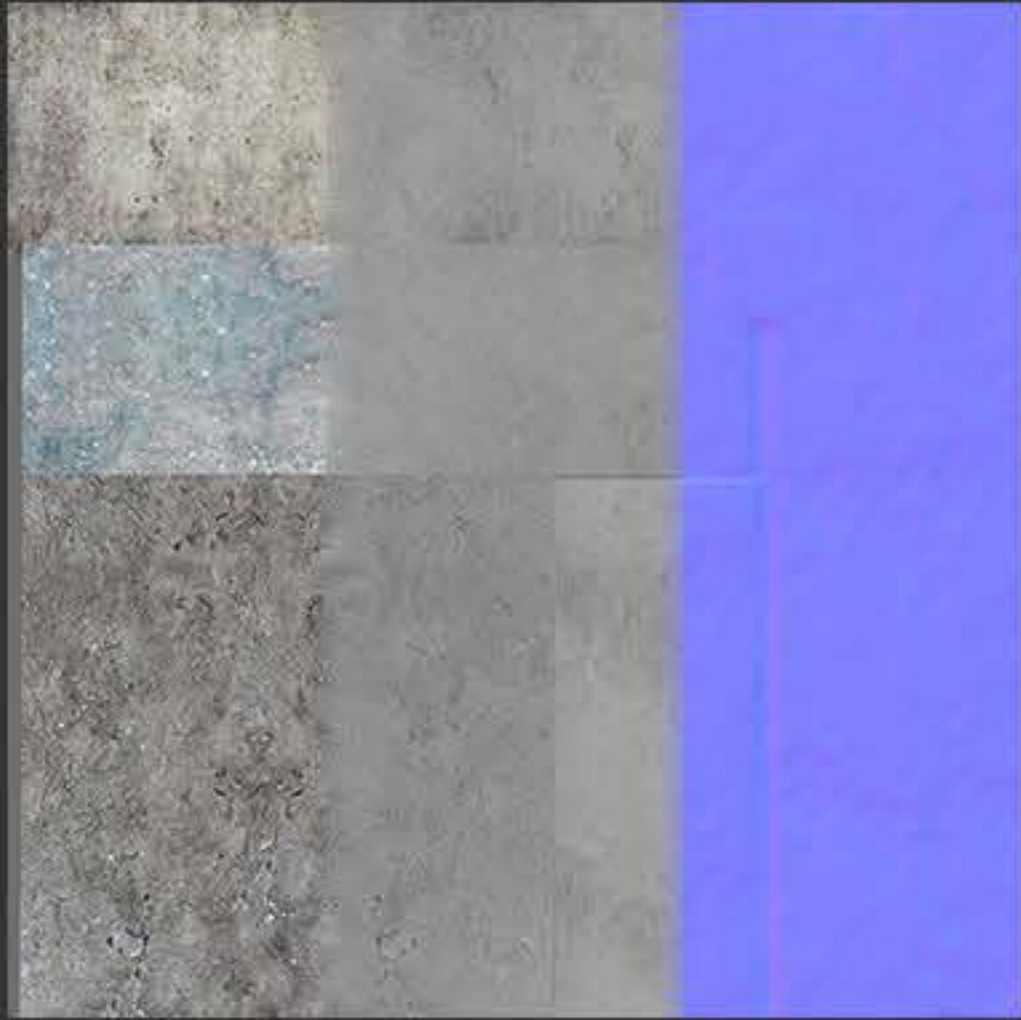


Diffuse

Texture Size: 2048

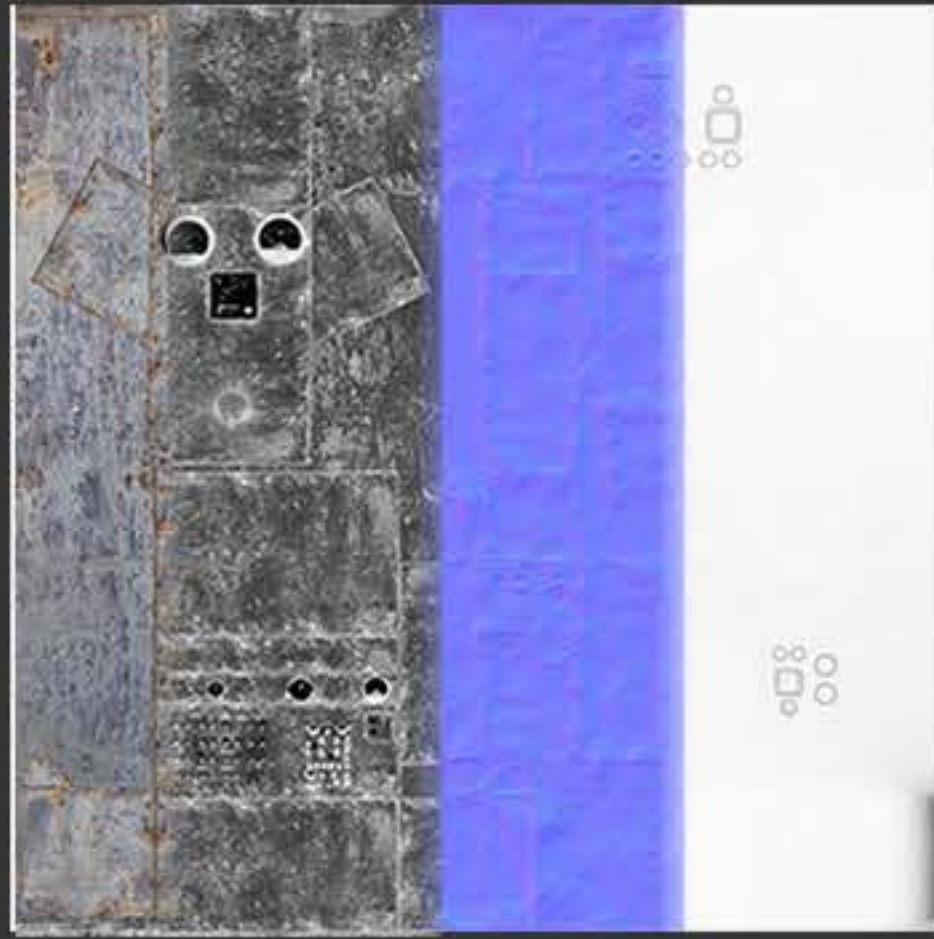
Rendered in Maya with Diffuse Map

Diffuse/Rough/Normal

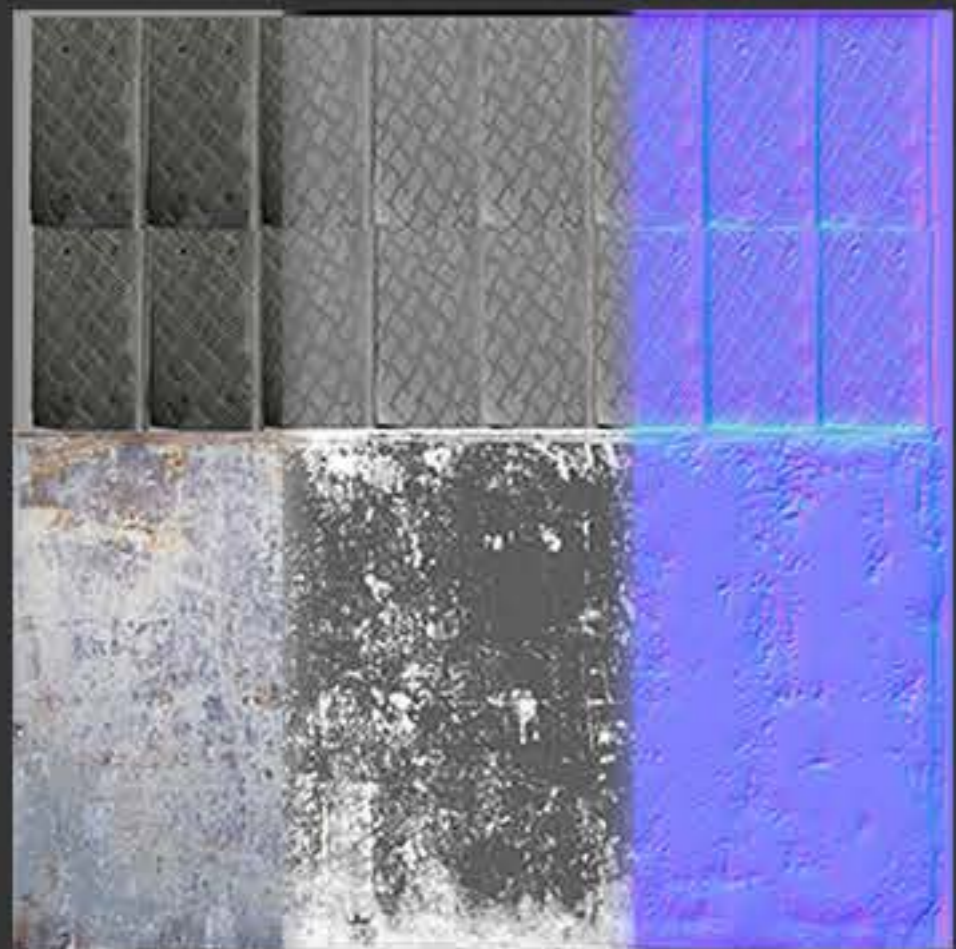
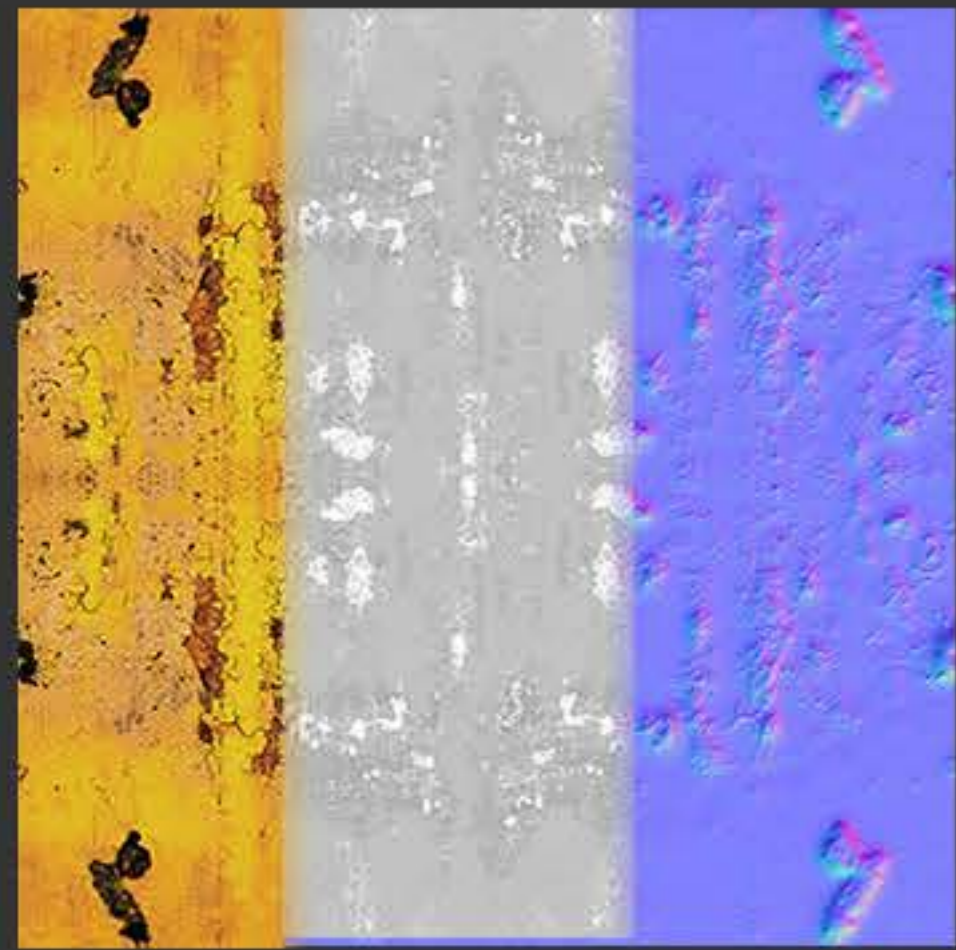


Texture Size: 2048

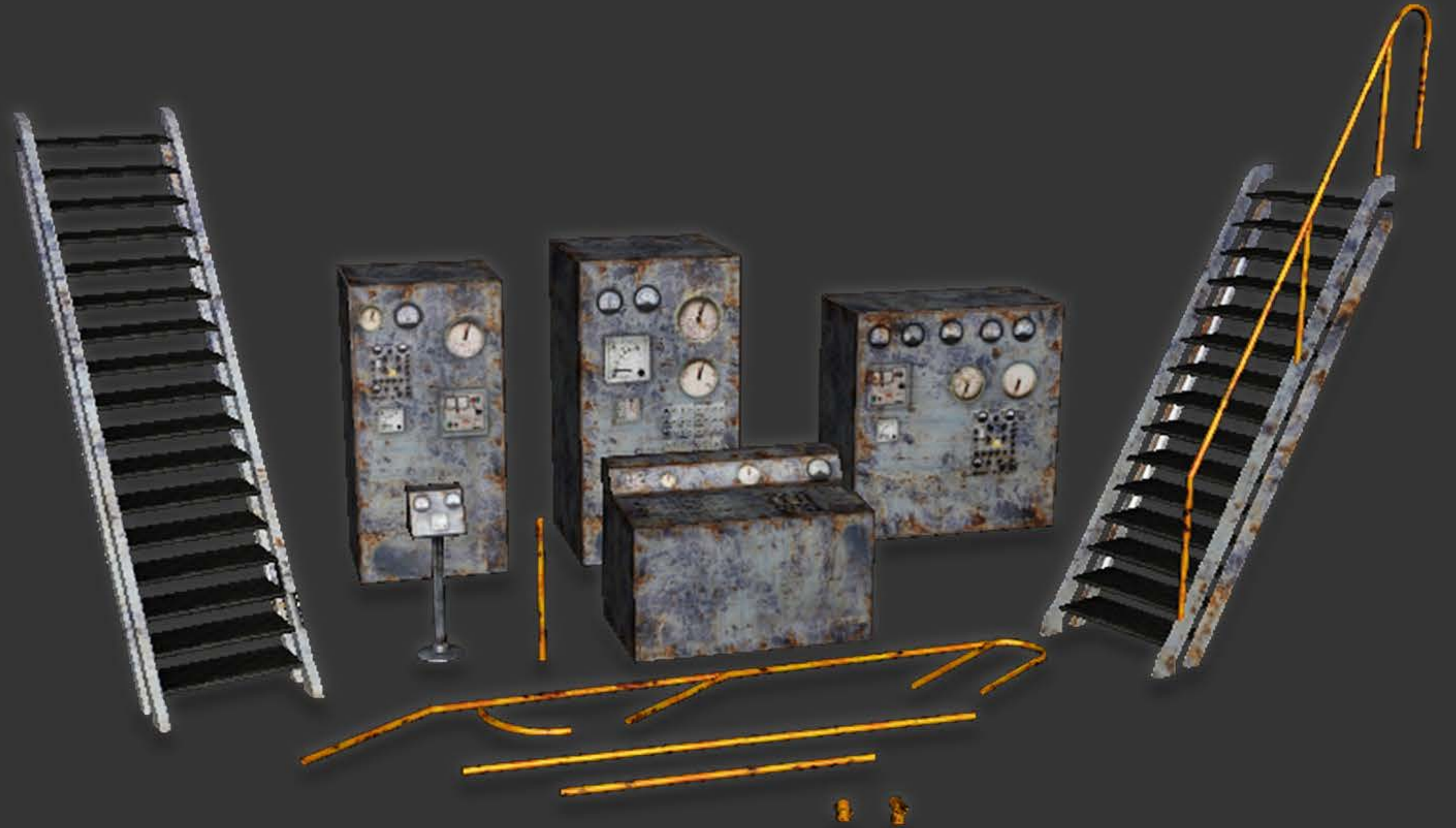
Rendered in Maya with Diffuse Map



Diffuse/Rough/AO/Normal

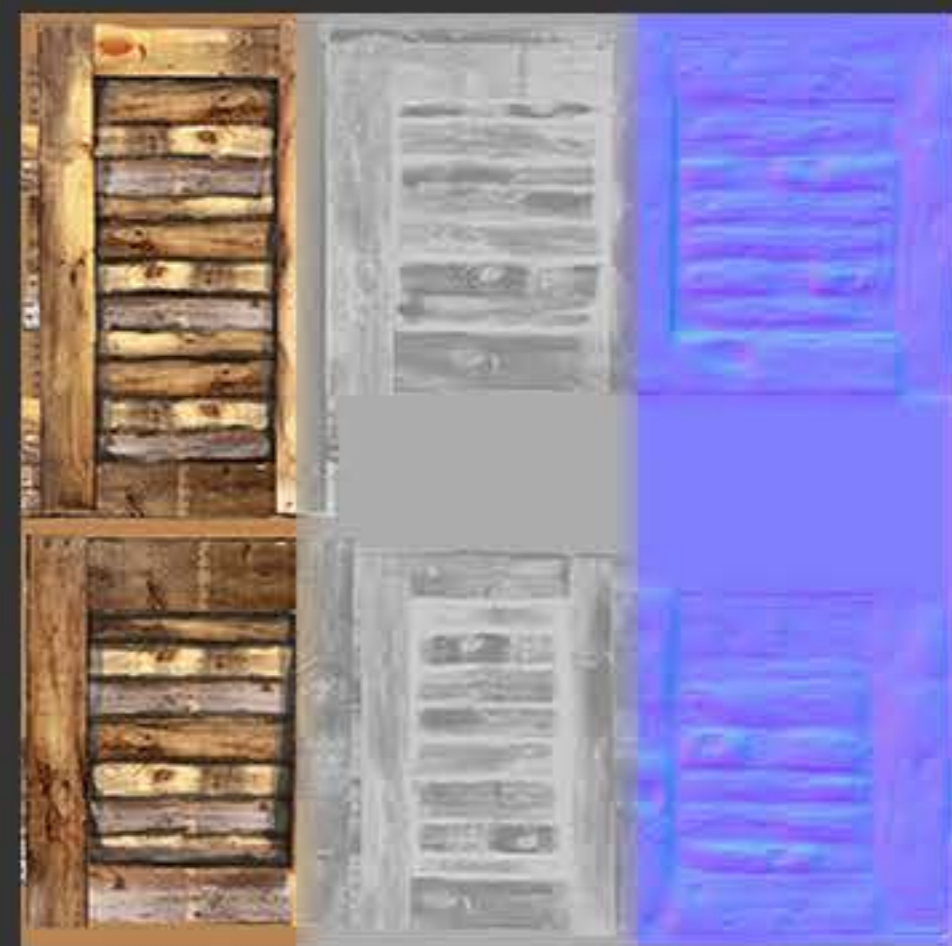
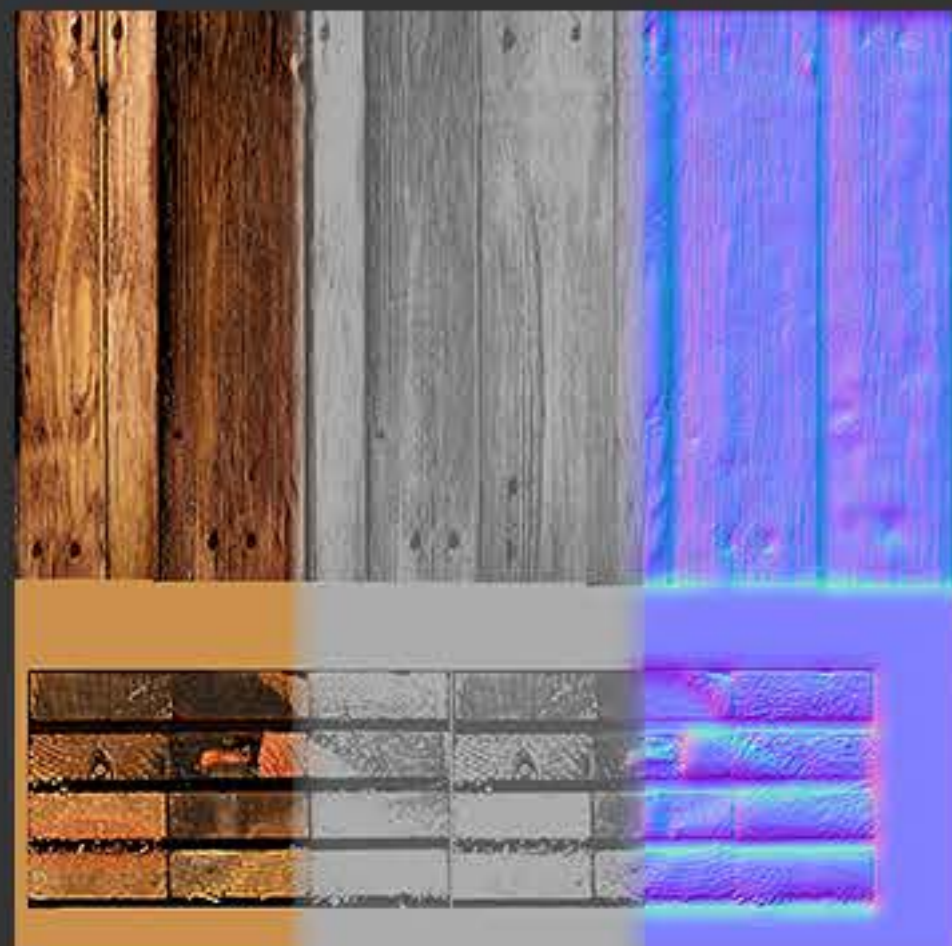


Diffuse/Rough/Normal

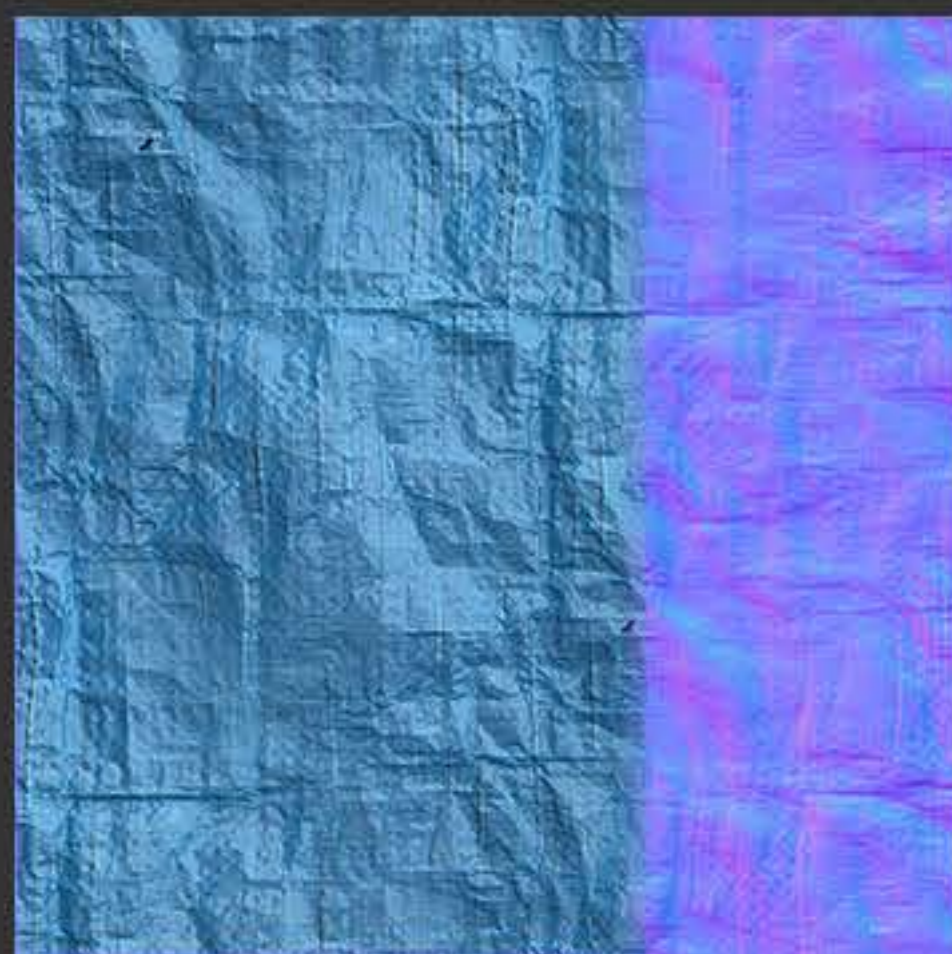


Texture Size: 2048

Rendered in Maya with Diffuse Map



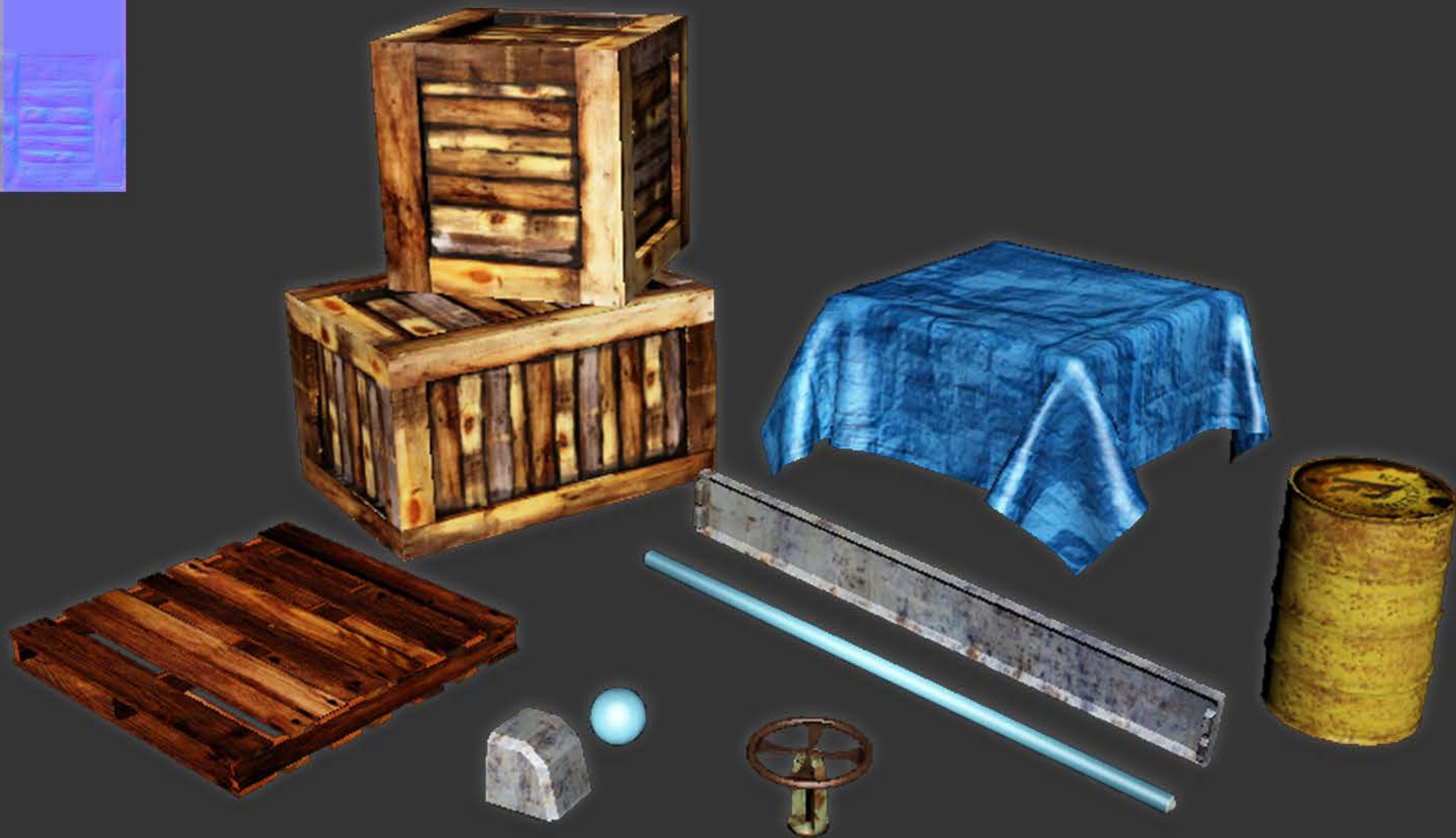
Diffuse/Rough/Normal



Diffuse/Normal



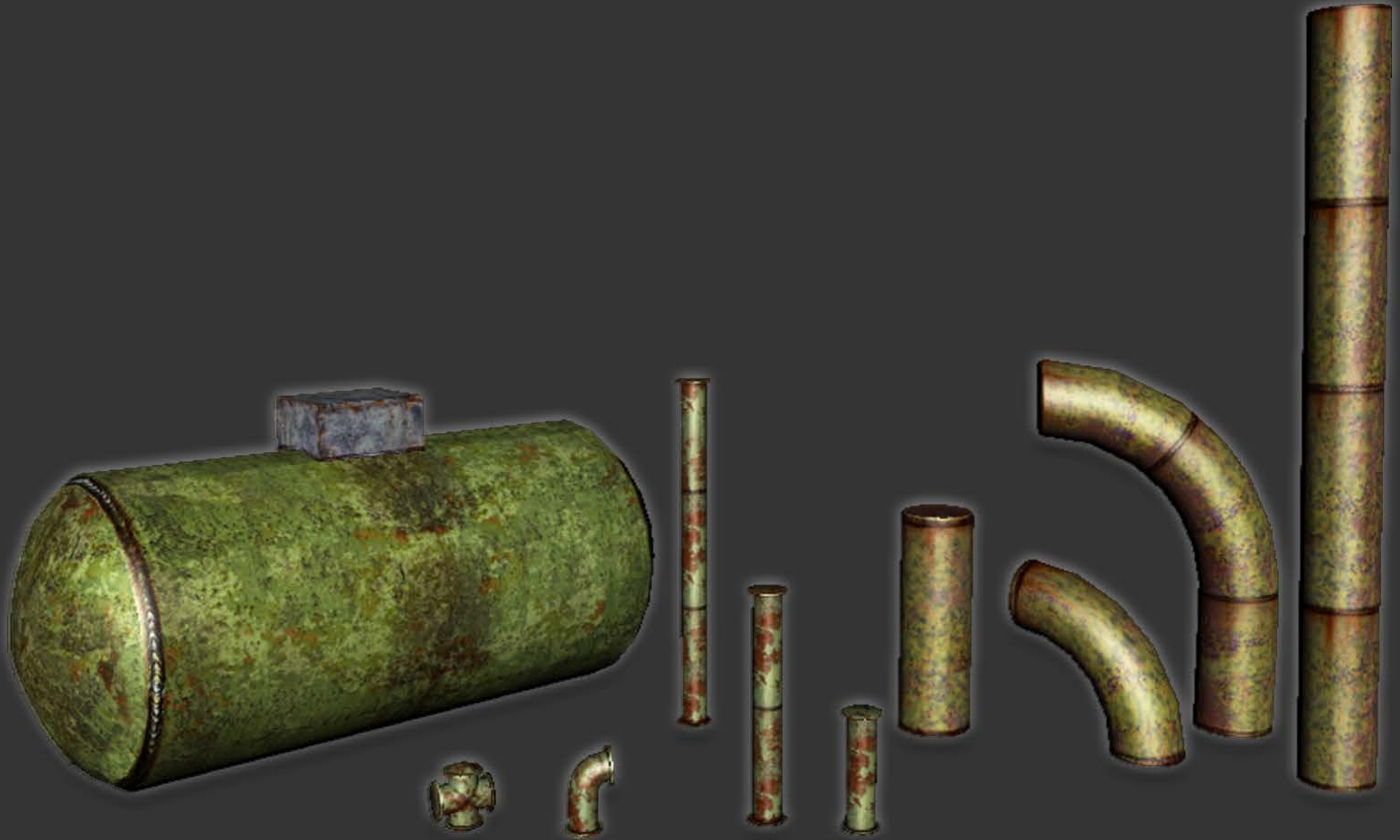
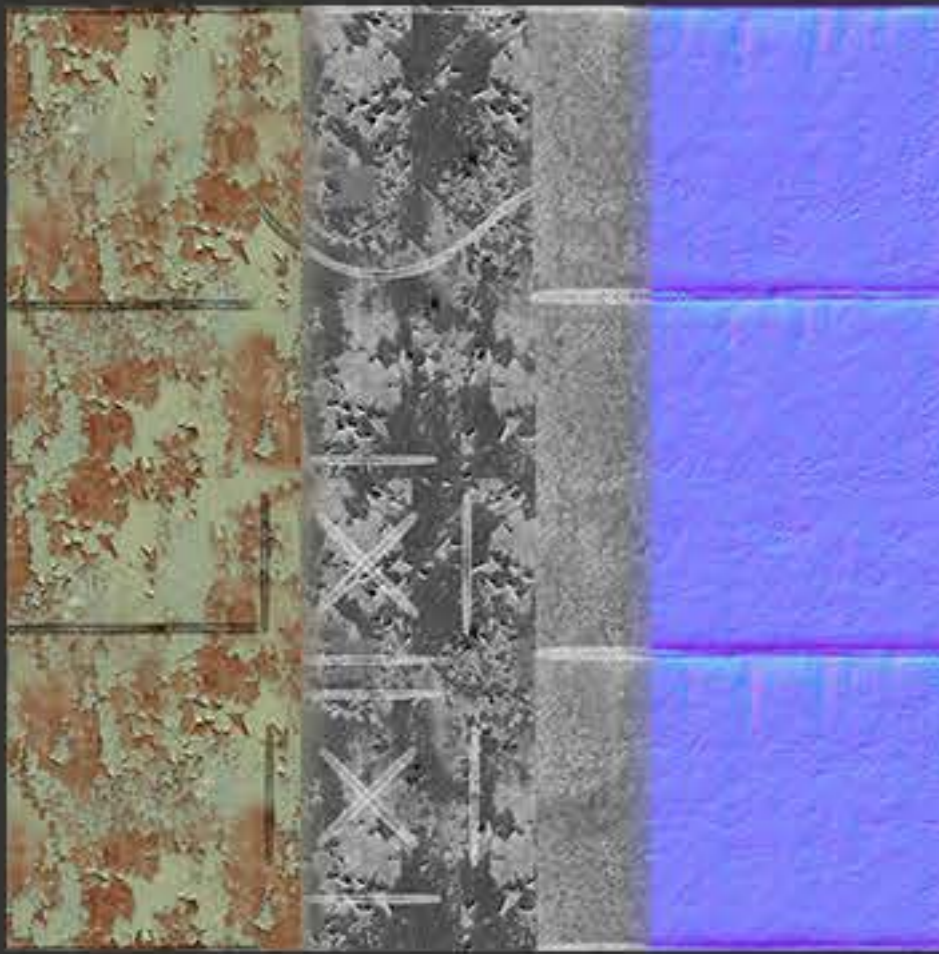
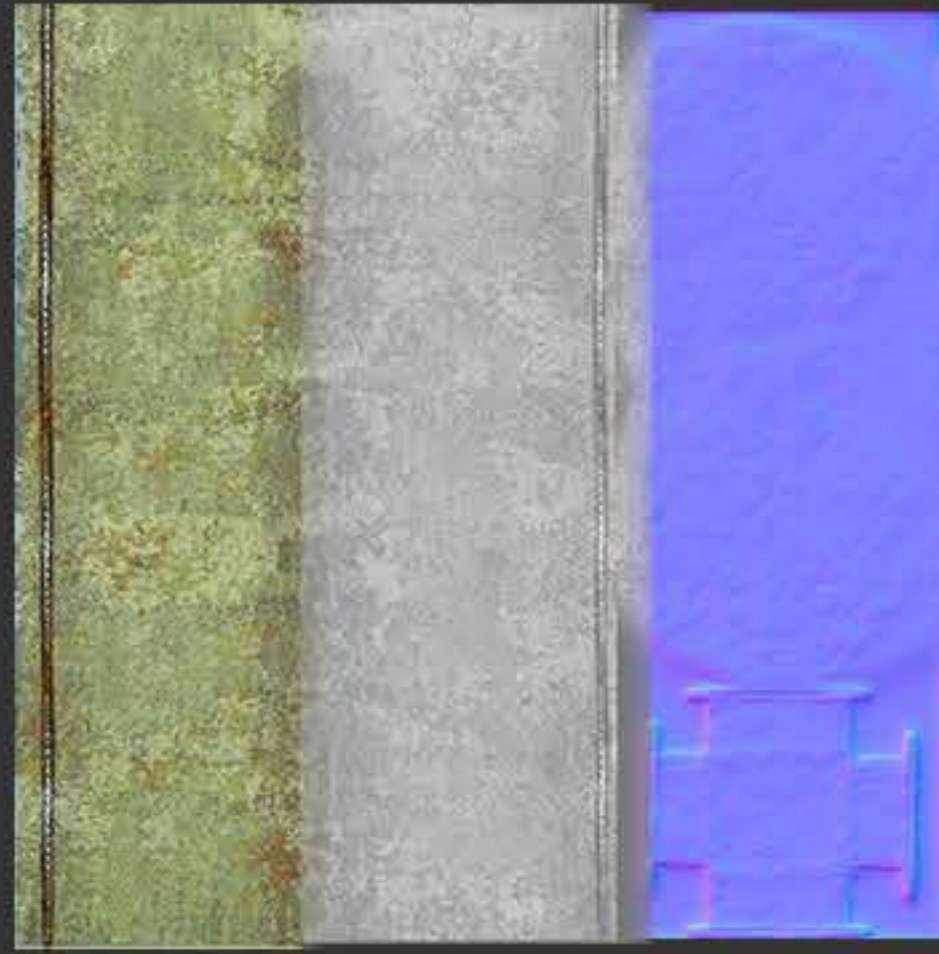
Rough/Normal/AO/Diffuse



Texture Size: 2048

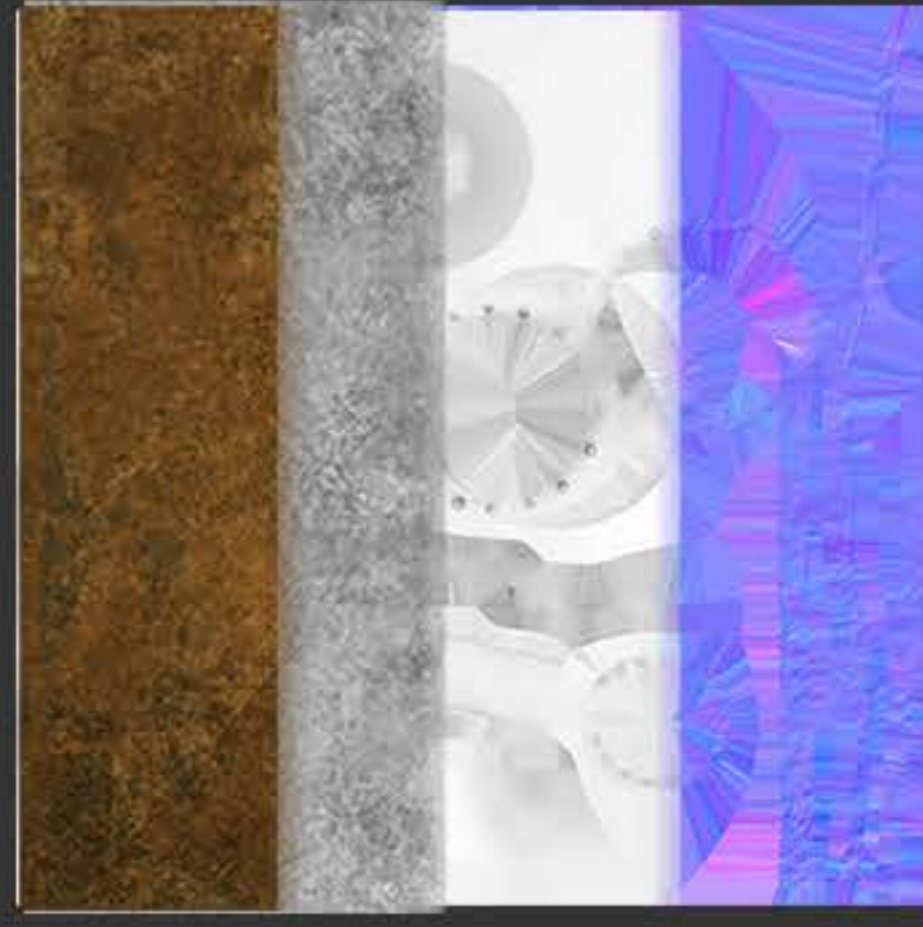
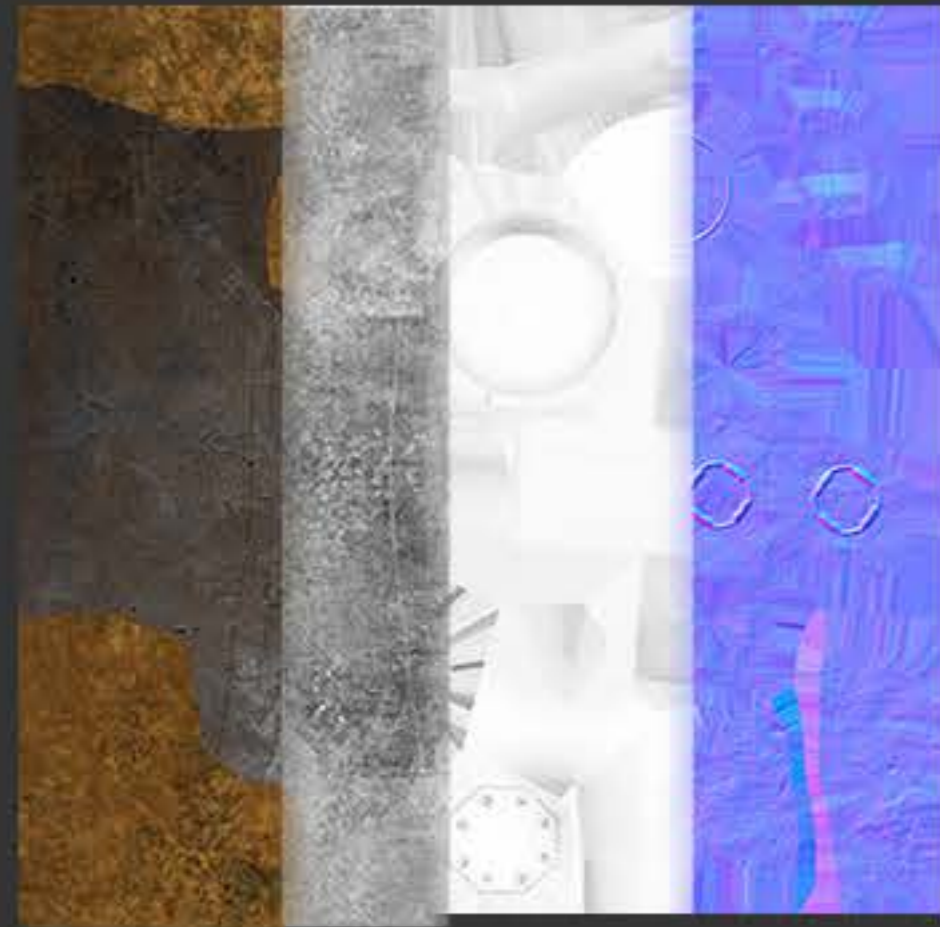
Rendered in Maya with Diffuse Map

Diffuse/Rough/Normal



Texture Size: 2048

Rendered in Maya with Diffuse Map



Diffuse/Rough/AO/Normal

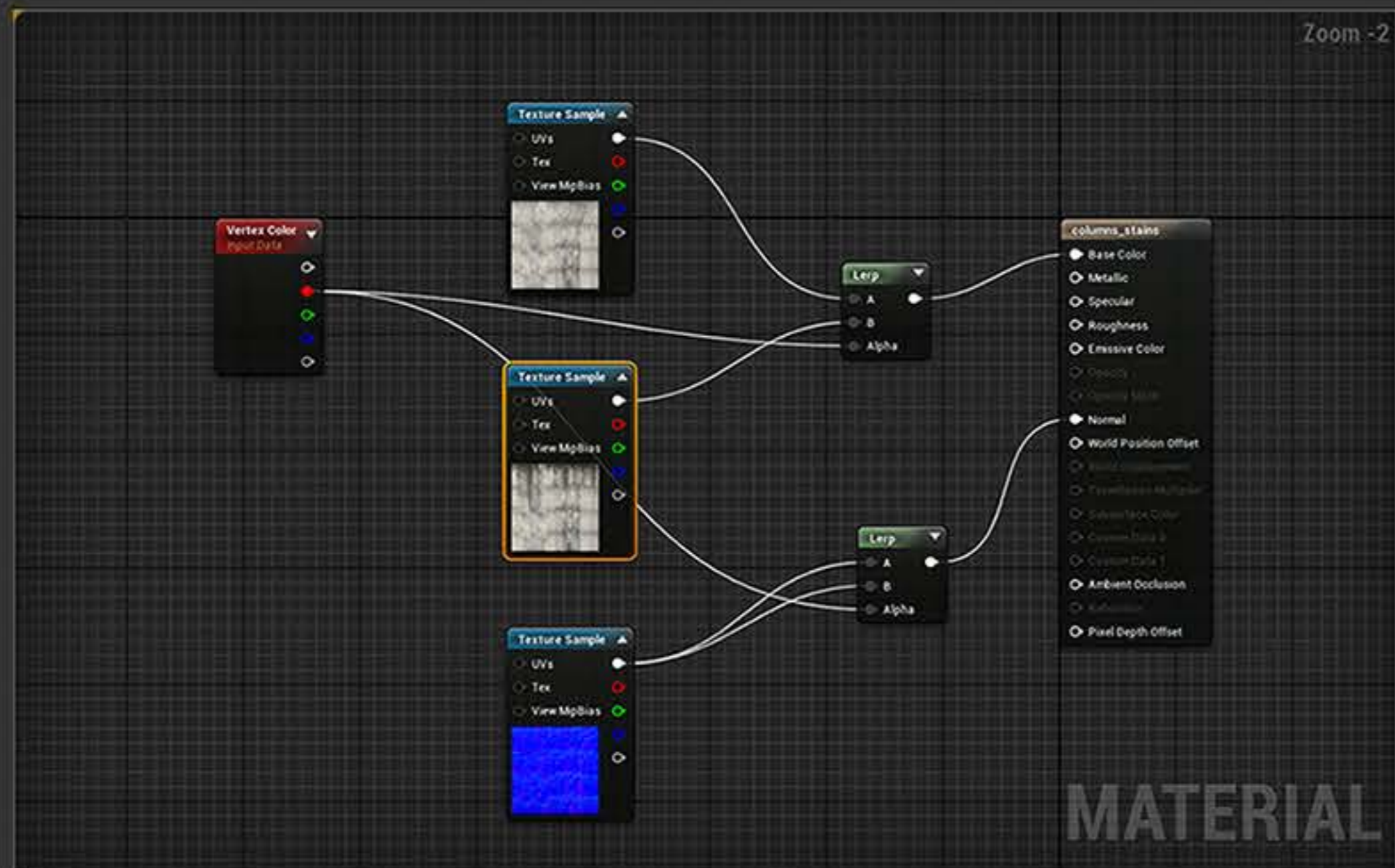


DiffuseRough/Normal

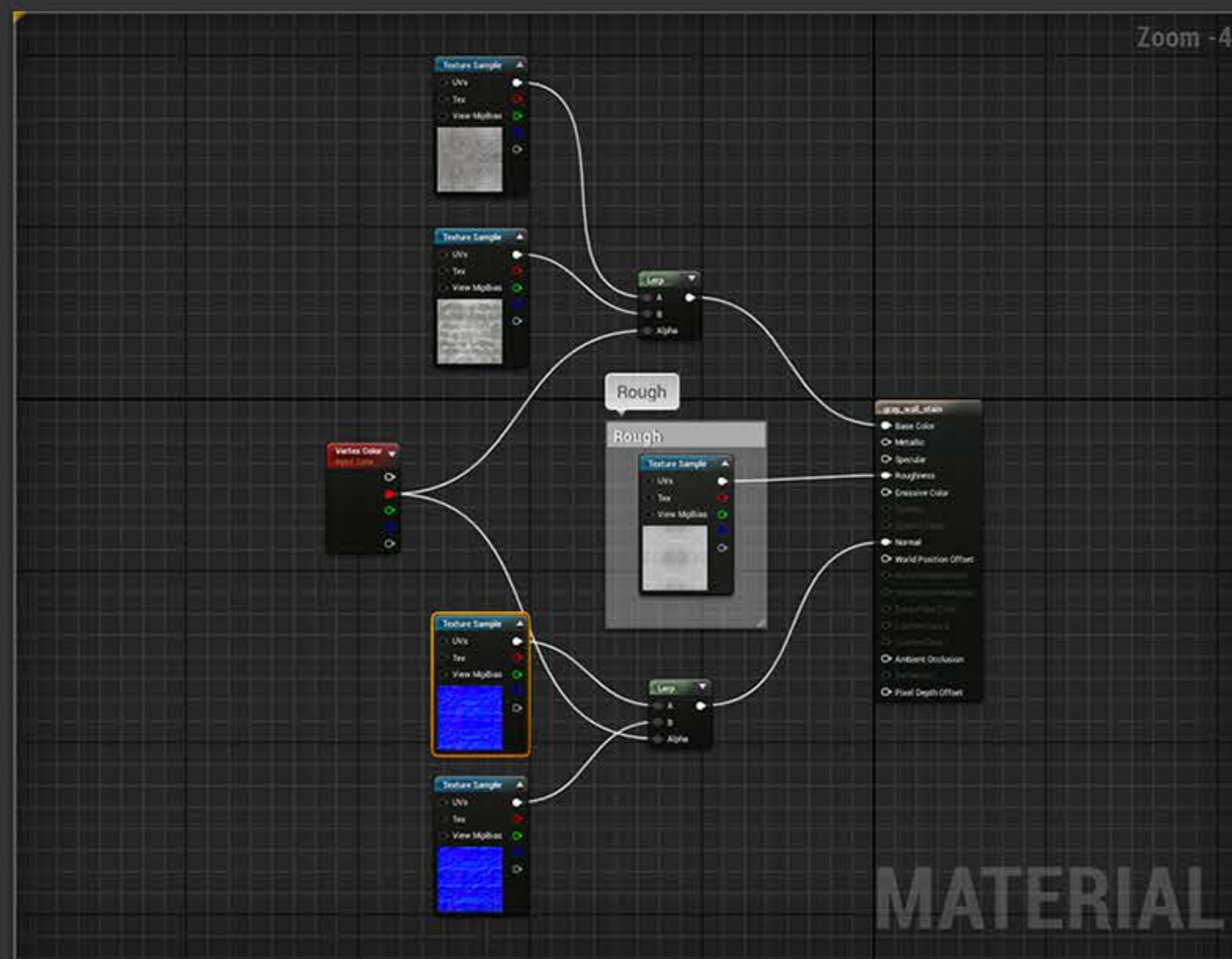
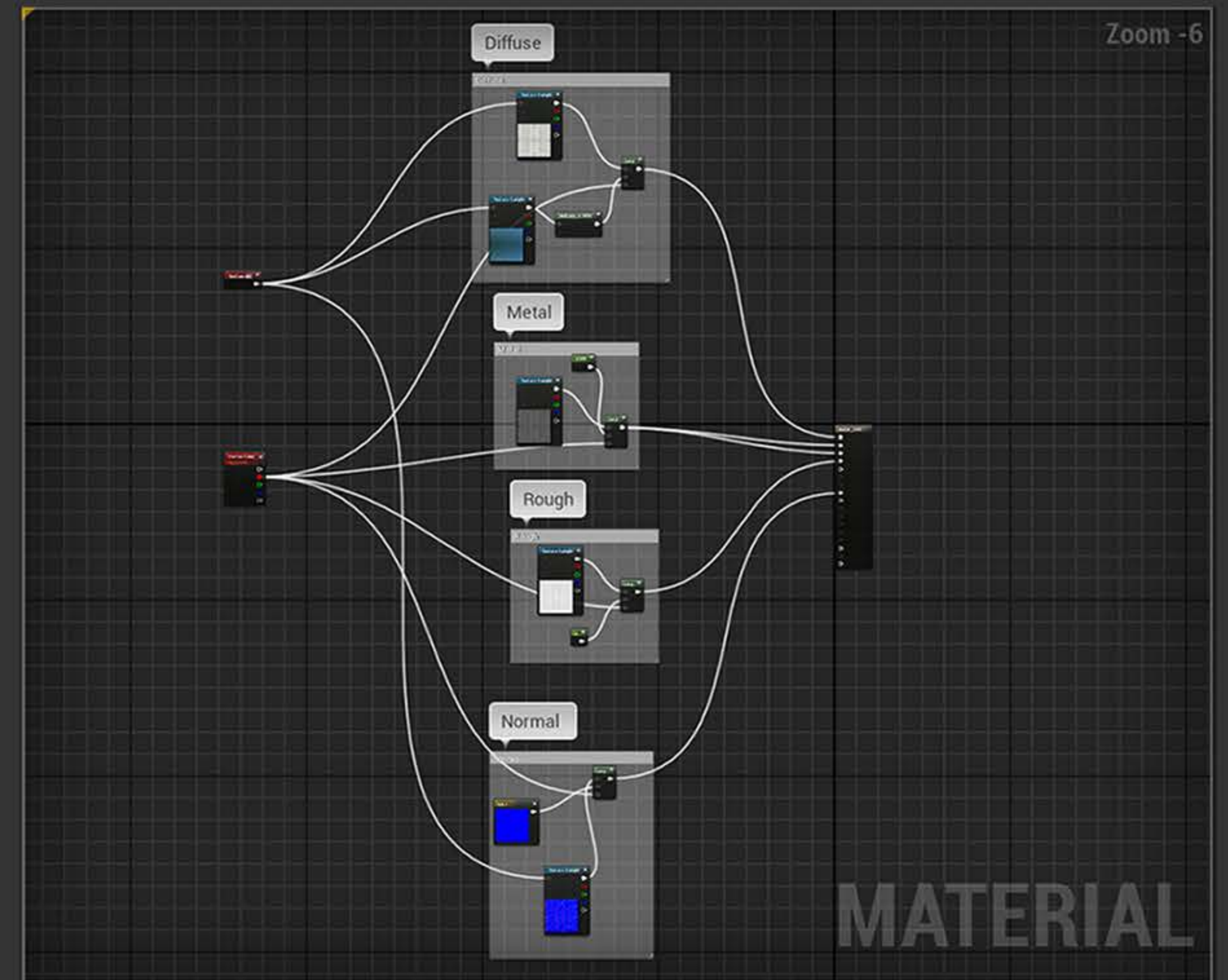


Texture Size: 2048

Rendered in Maya with Diffuse Map



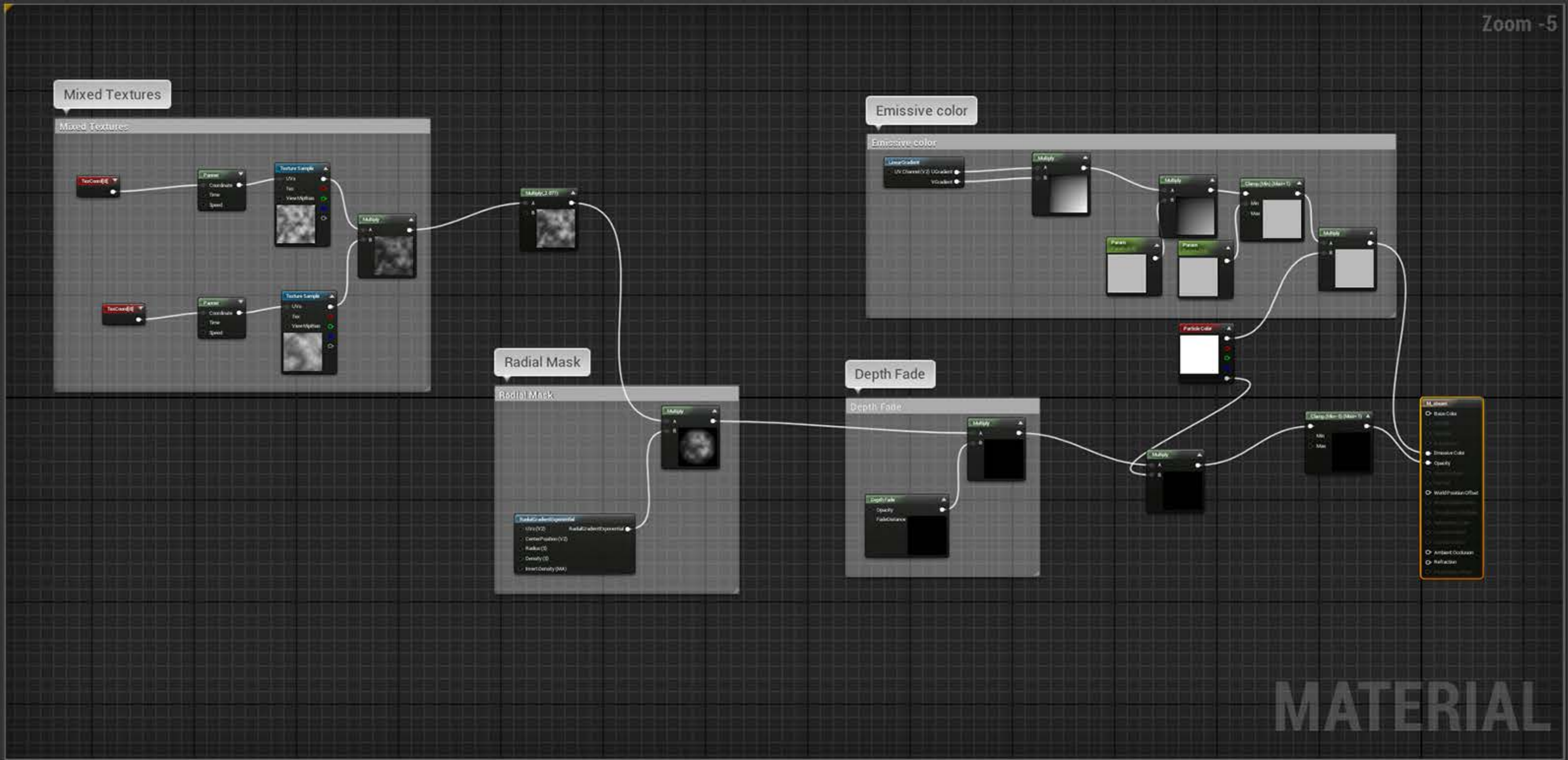
Vertex painting Material setup: Water Puddle, Concrete Wall, and Column Stains.



Texture Size: 2048



Zoom -5



Texture Size: 2048