

Acacia Tree Models

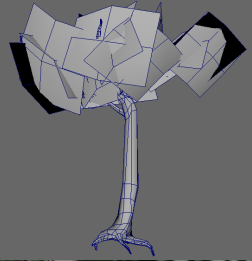
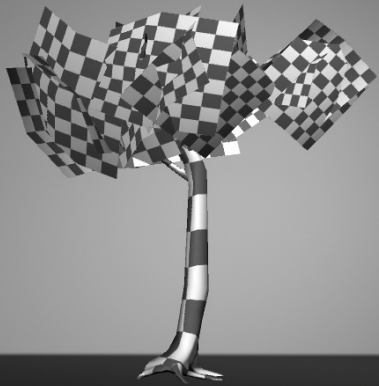
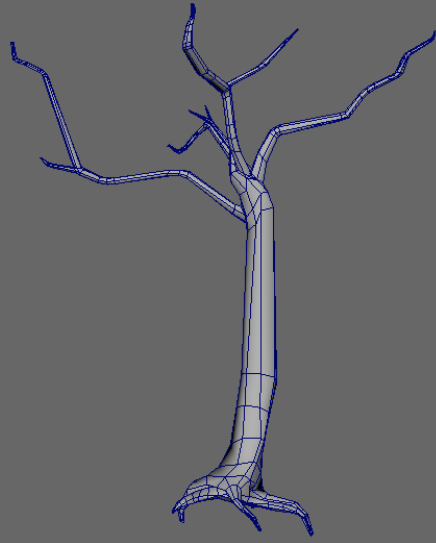
Elvin Ozsabin



Tree Variation 1

890 Polys

A broad and relatively flat tree

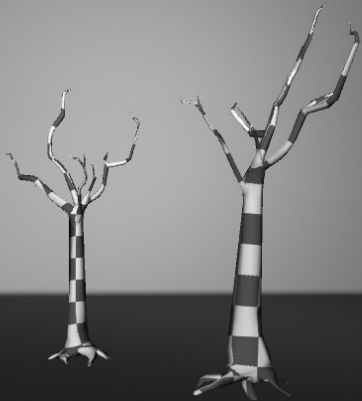
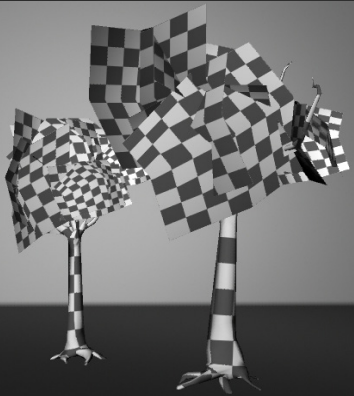
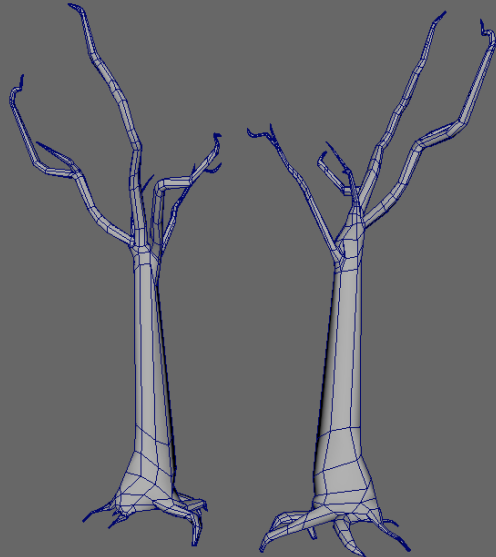




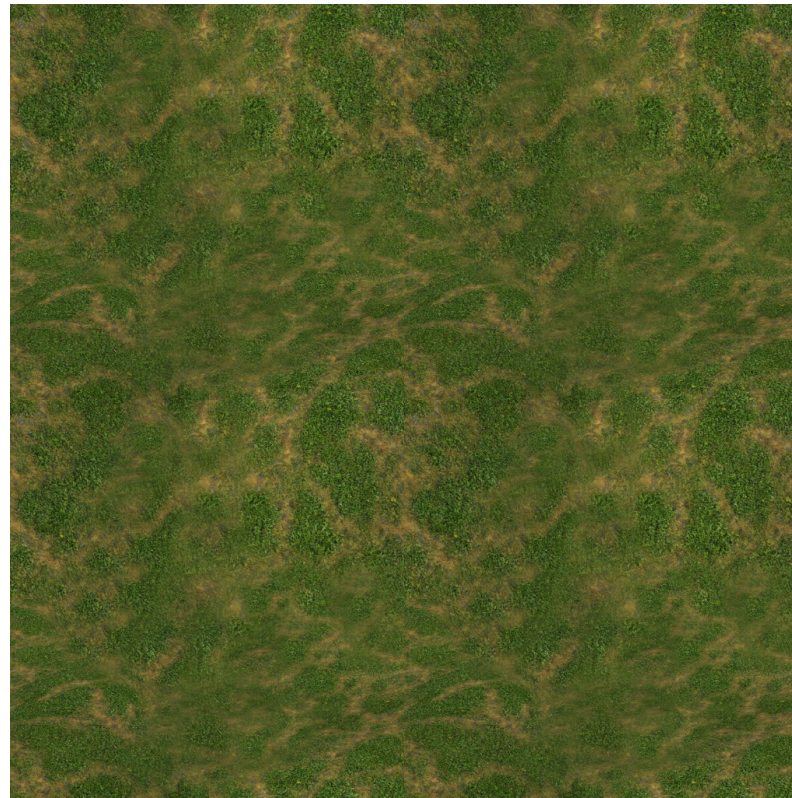
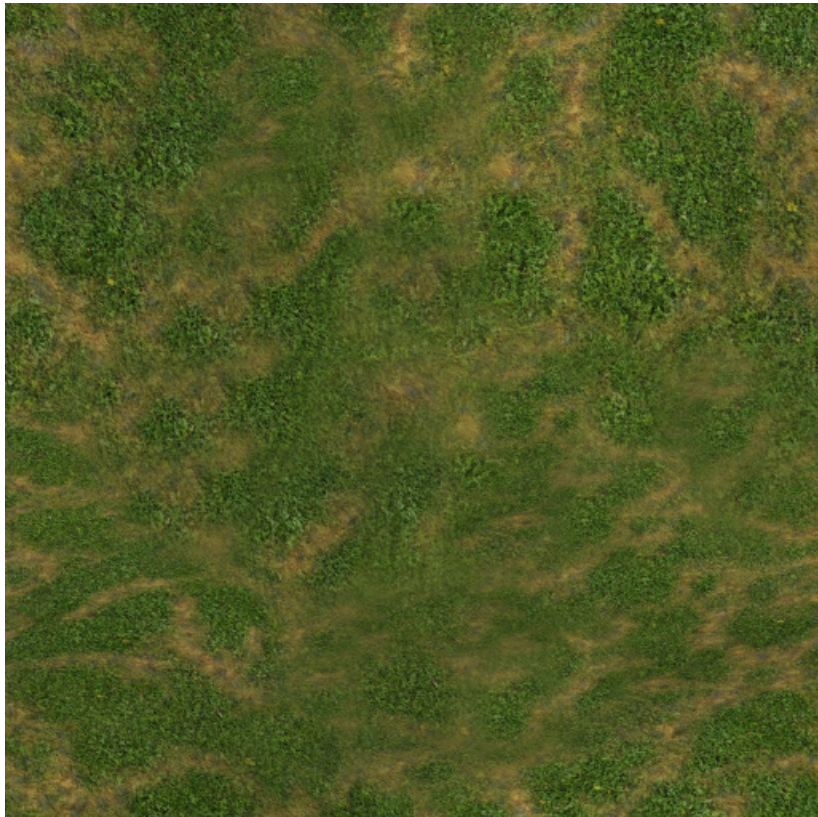
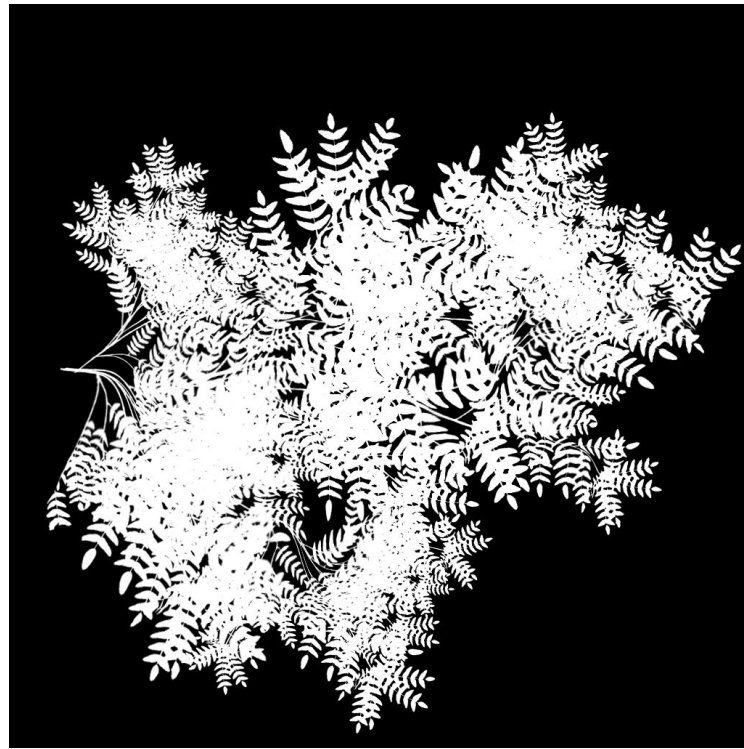
Tree Variation 2

865 Polys

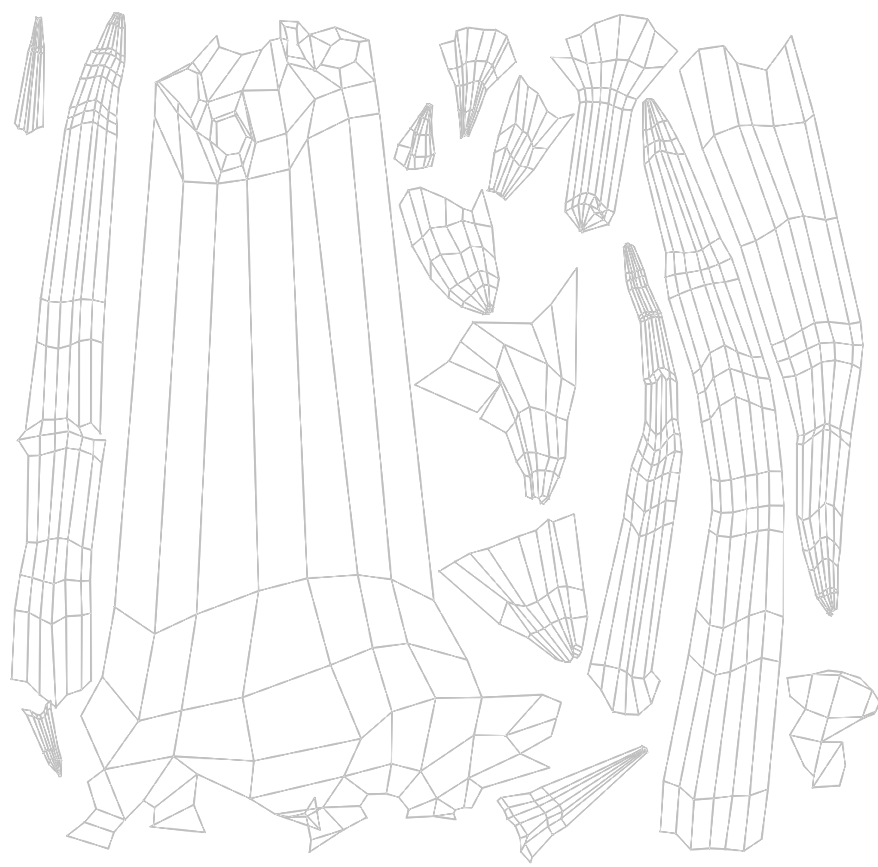
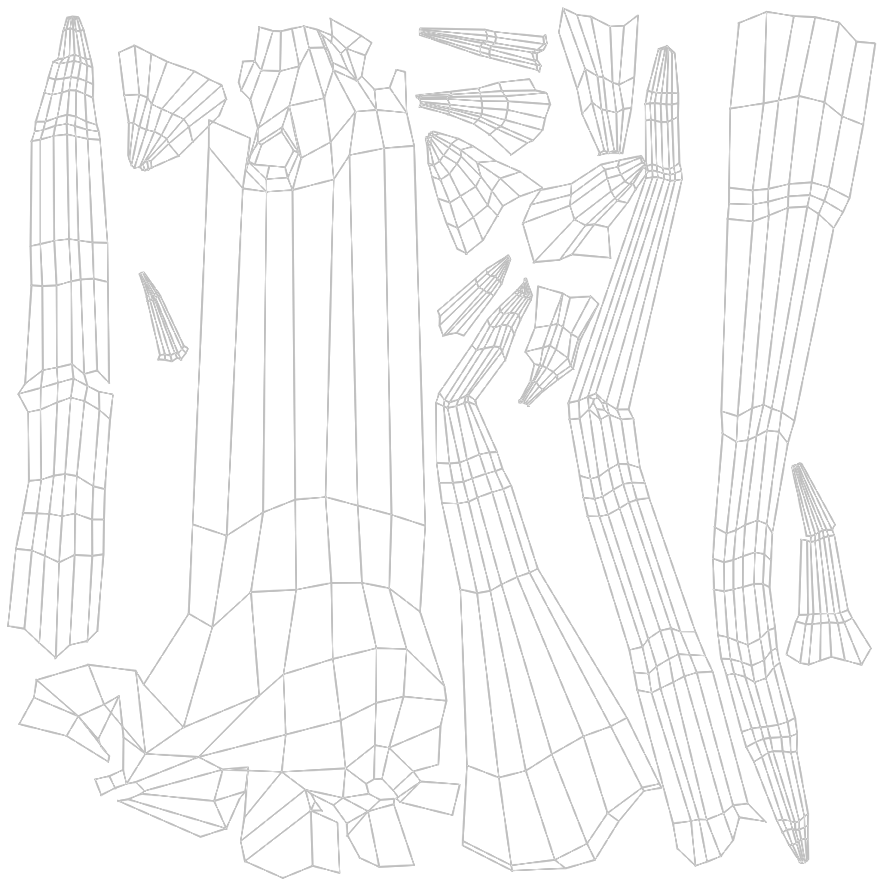
A more circular and smaller version



Other Maps

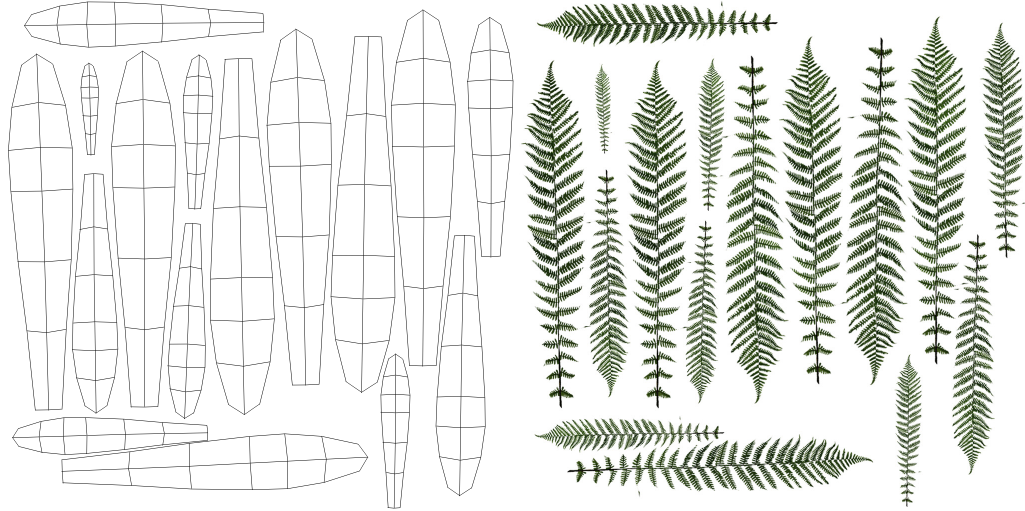
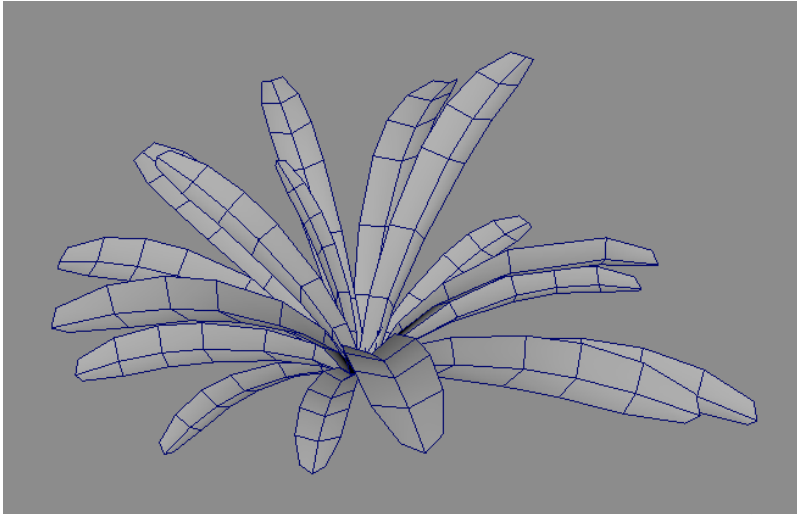


UV Maps



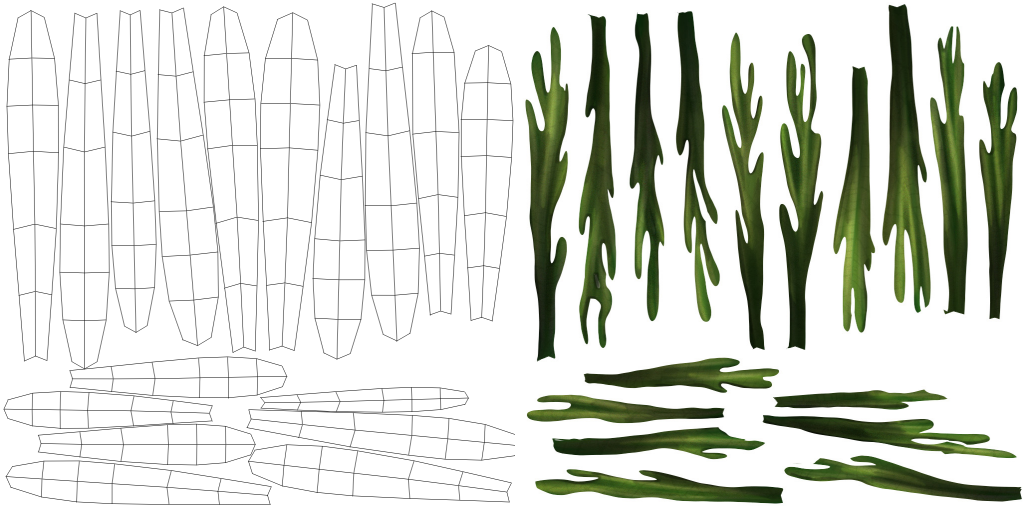
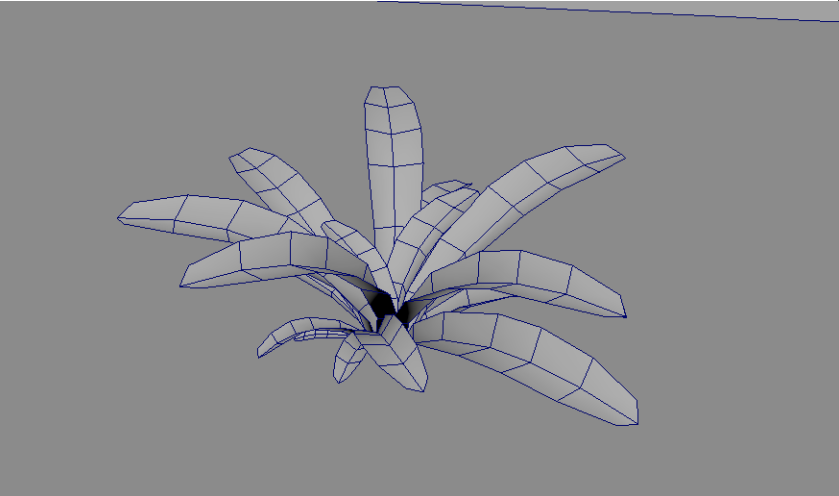
LADY FERN

Poly Count: 192
1 Alpha and Diffuse Map



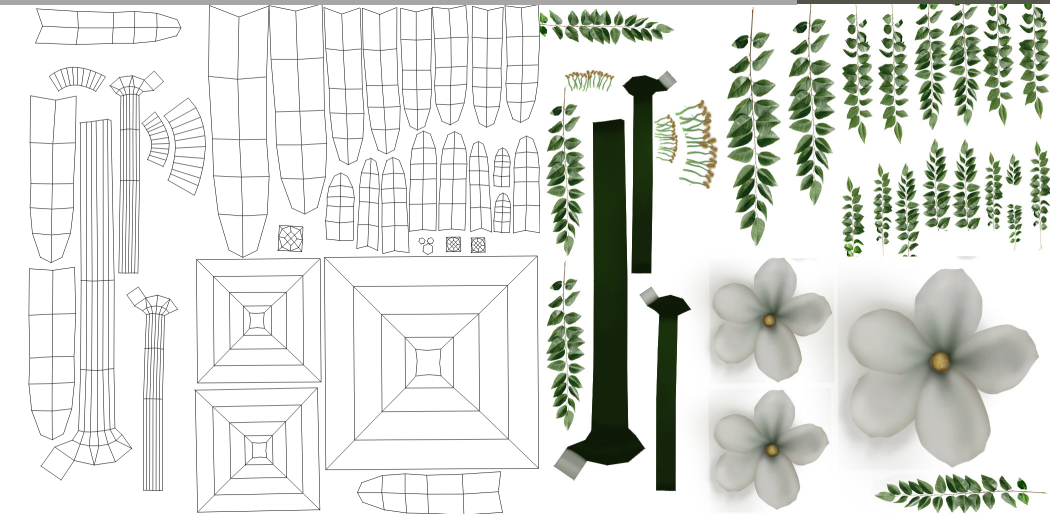
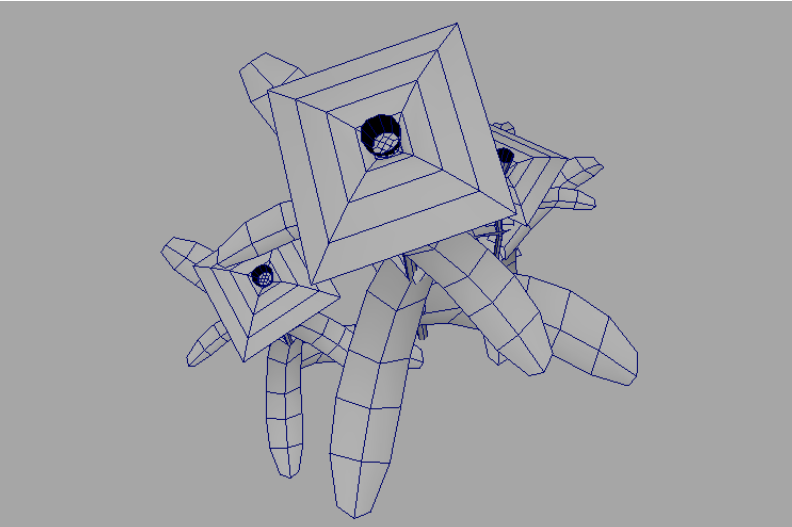
STAGHORN FERN

Poly Count: 202
1 Alpha and Diffuse Map



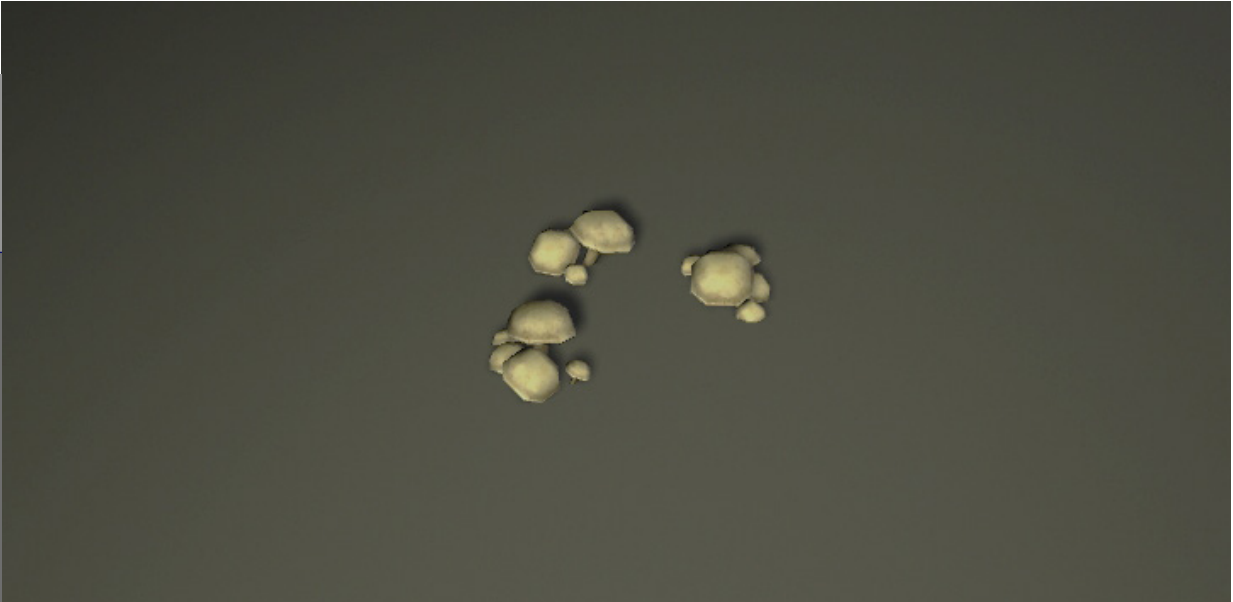
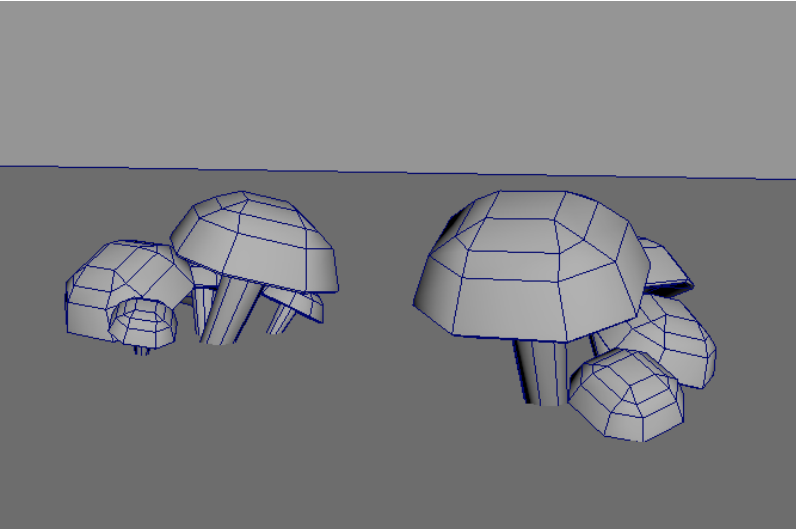
FLOWER

Poly Count: 444
1 Alpha and Diffuse Map



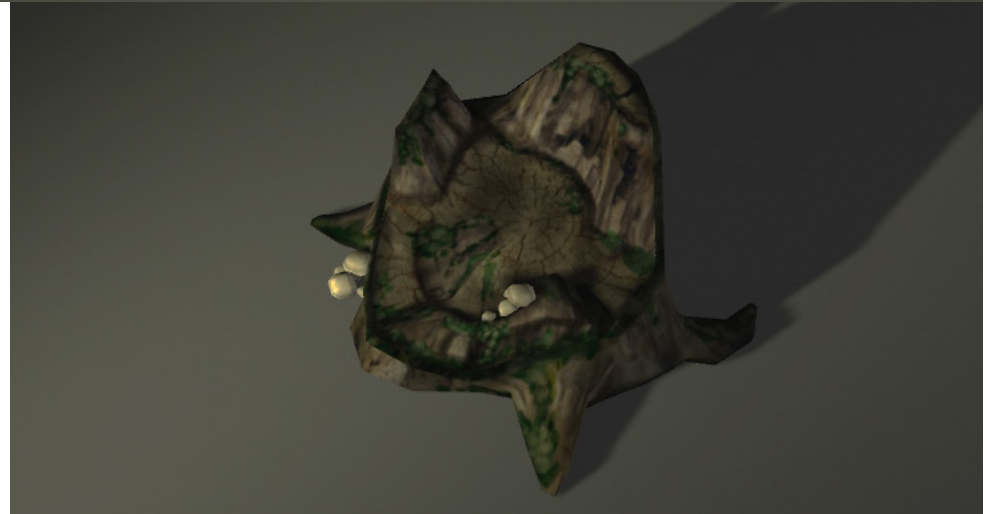
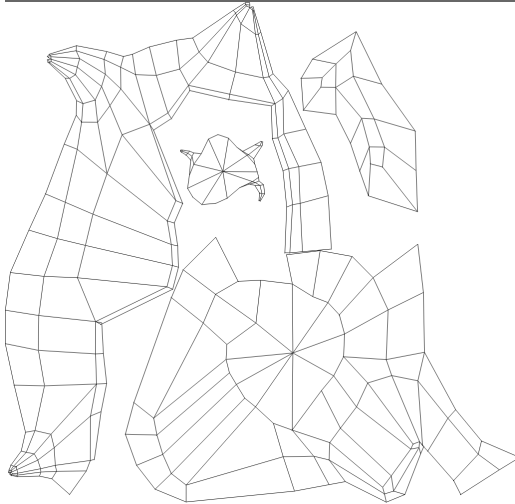
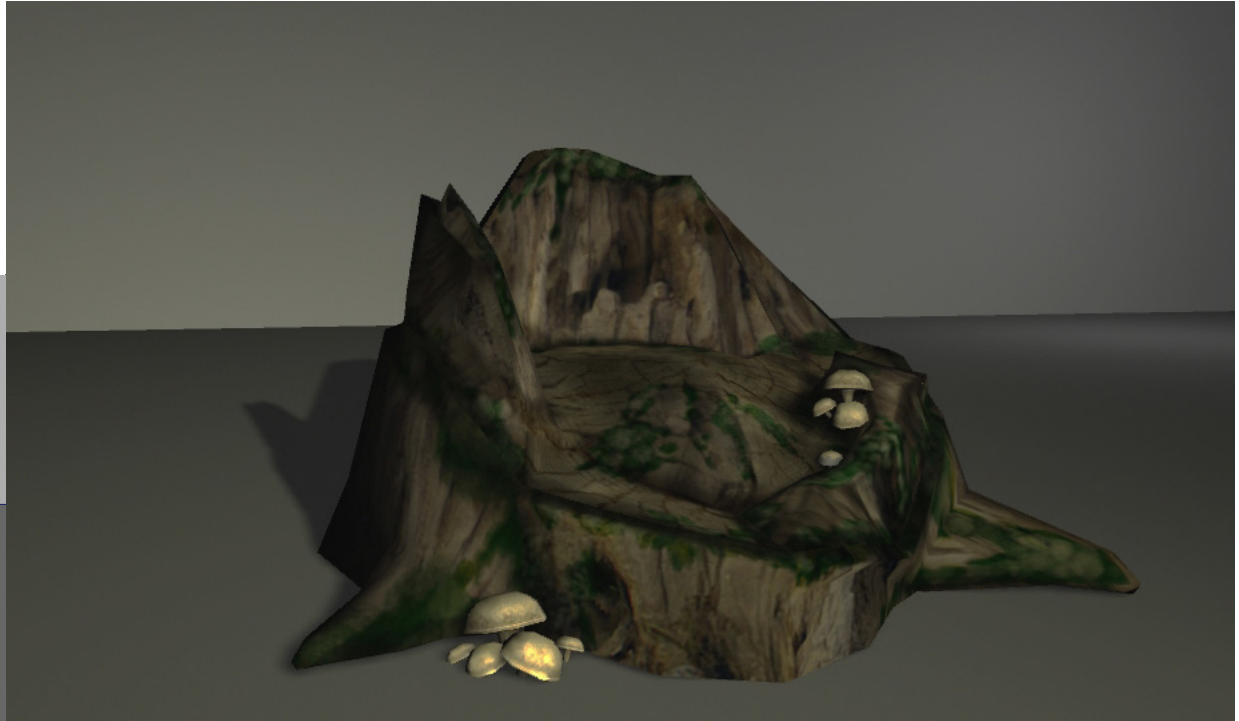
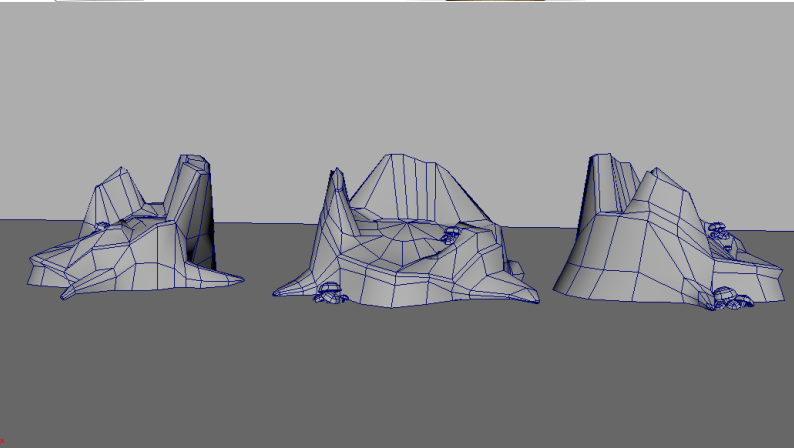
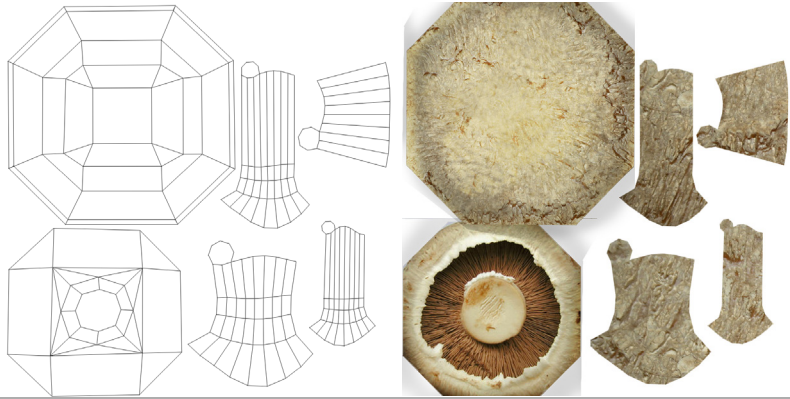
MUSHROOMS

Poly Count: 350
1 Diffuse Map

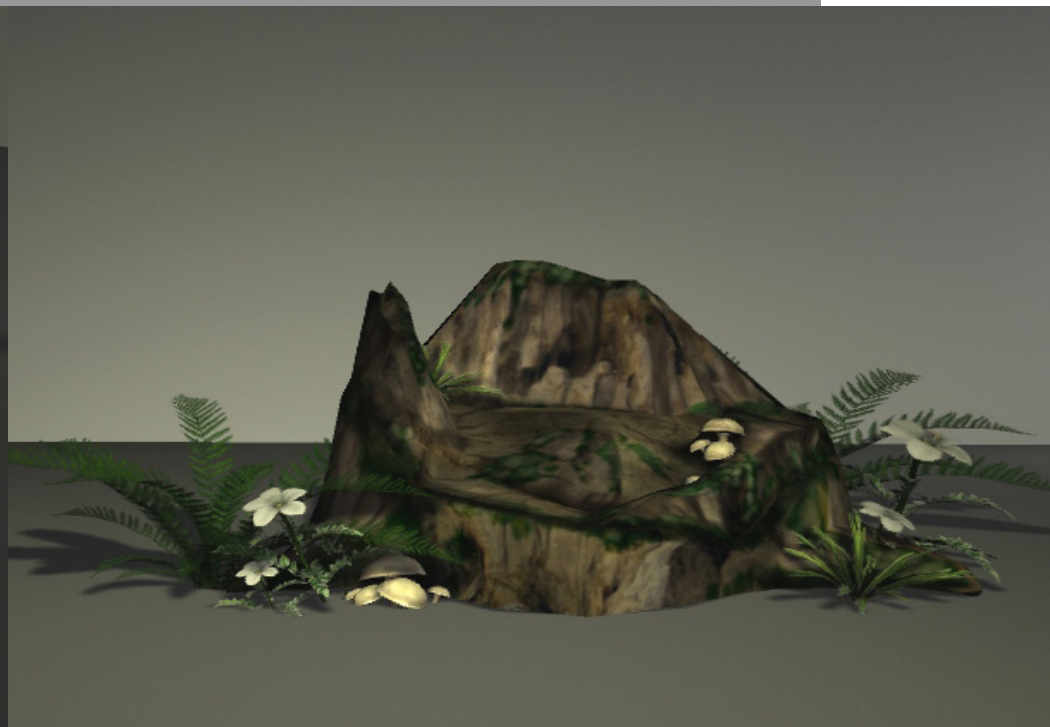
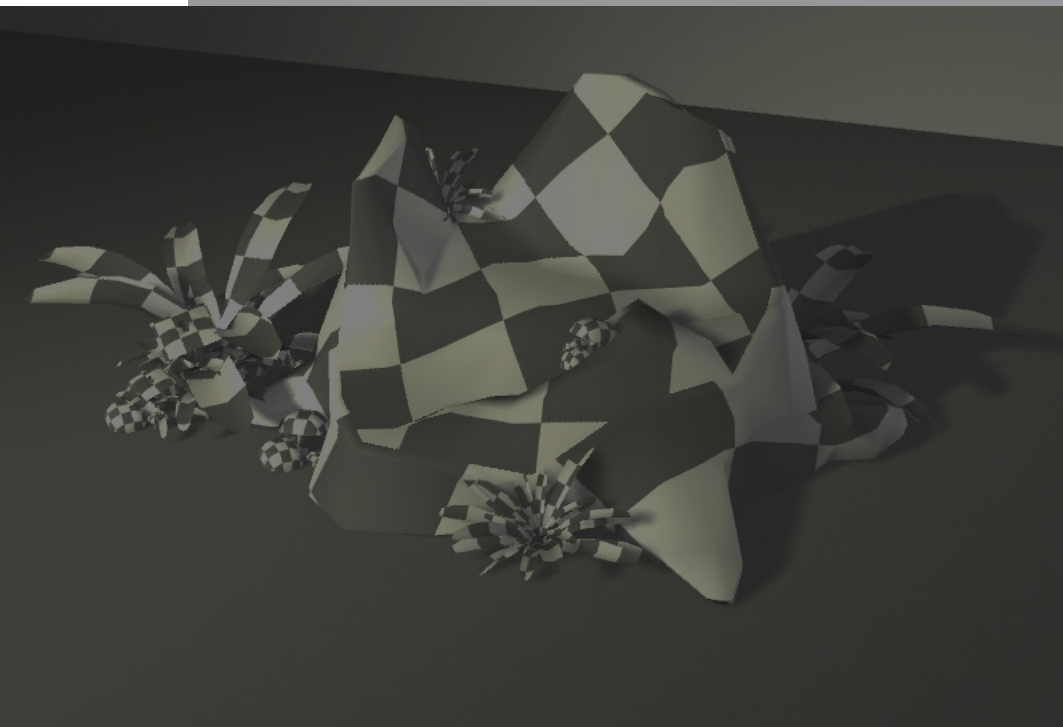
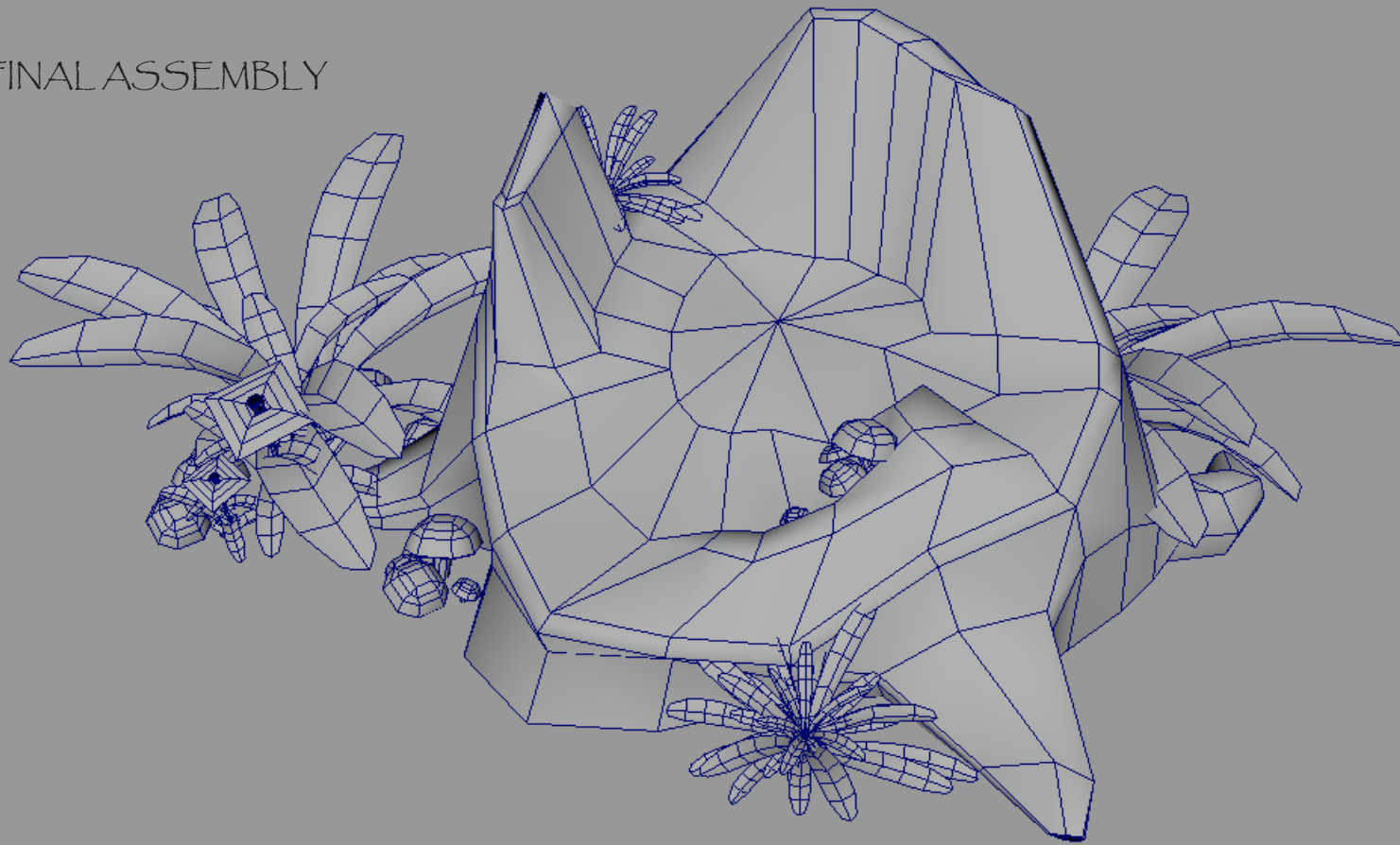


EXTRA: TREE TRUMP

Tree Trump Poly Count: 234
Mushrooms Poly Count: 702
3 Diffuse Maps & 3 Seperate Meshes



FINAL ASSEMBLY



PROJECT B: UNREAL SCREENSHOTS

Elvin Ozsahin







